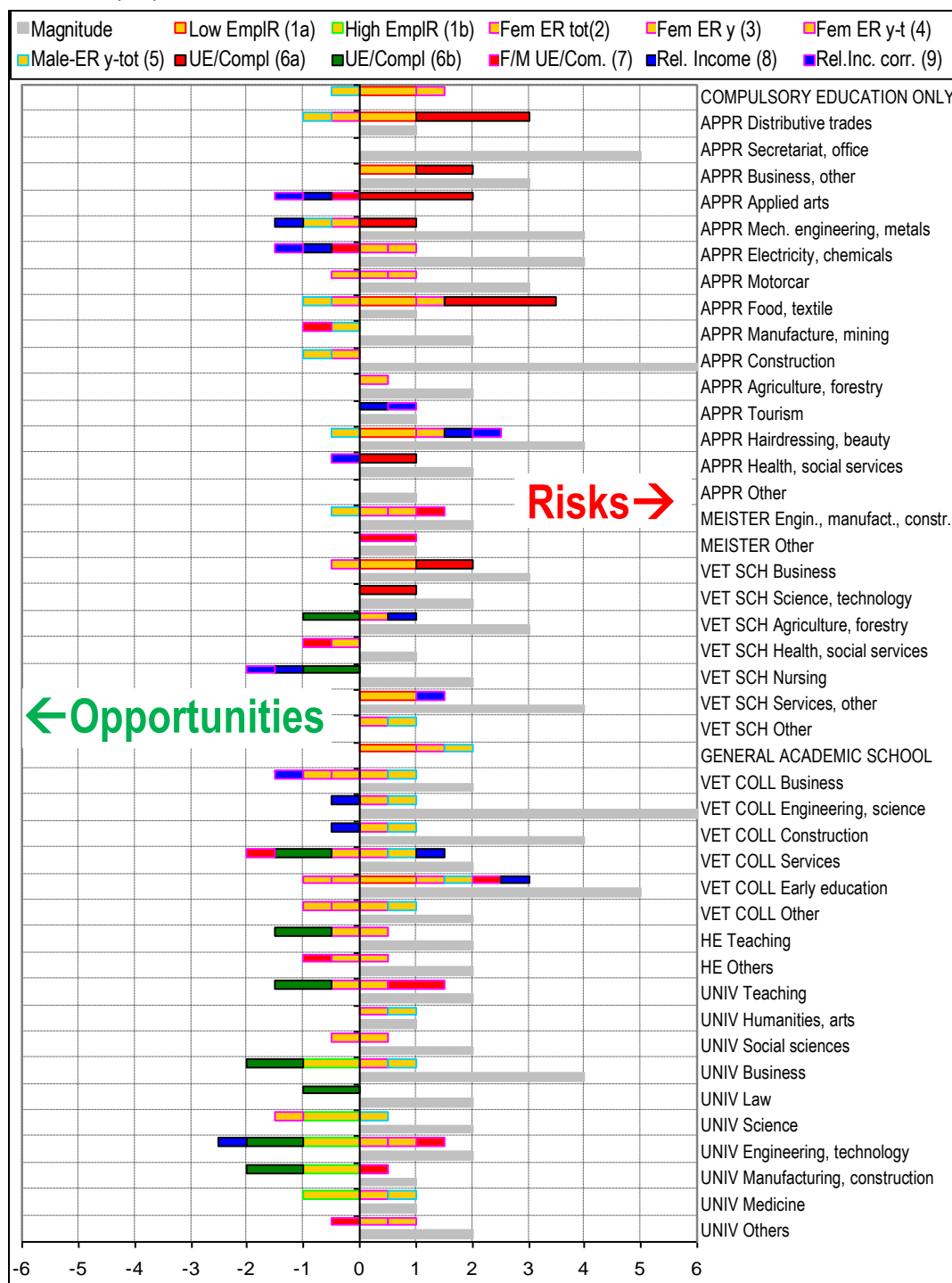


Marker Employment



1a) Low EmplR: Employment rate low	4) Fem ER y-t: employment rate young – total, female	7) F/M UE/Com.: unemployed / completers f // unemployed / completers m
1b) High EmplR: Employment rate high	5) Male-ER y-tot: employment rate young – total, male	9) Rel. Income: Income as compared to average of education level above +10% or below -10%
2) Fem ER tot: female employment rate - male employment rate, total	6a) UE/Compl: unemployed / completers high	10) Rel.Inc. corr.: Income as compared to average of education level above +10% or below -10% corrected for gender
3) Fem ER y: female employment rate - male employment rate, young	6b) UE/Compl: unemployed / completers low	Magnitude: % of category among total completers