

Lorenz Lassnigg (lassnigg@ihs.ac.at)

ANNEX to forthcoming paper:

“Austrian performance on the youth labour market – institutional diversity and high political consensus”

to be found at <http://www.equi.at/dateien/youth-ann.pdf>

equi-IHS, employment-qualification-innovation (www.equi.at)

Institute for Advanced Studies (www.ihs.ac.at),

1060 Vienna, Stumpergasse 56, Austria

Content

A 1:	Youth in education, employment and labour market 2004-2012(11), absolute figures	3
A 2:	Youth in education, employment and labour market 2004-2012(11), % of population	4
A 3:	Youth in education, employment and labour market 2004-2012(11), Index 2004=1	5
A 4:	Youth in education, employment and labour market 2004-2012(11), Index 2004=1	6
A 5:	Apprenticeship, apprenticeship market, education by levels 2004-12(11), Index 2004=1	7
A 6:	Support of Apprenticeship 2004-11, absolute and %	7
A 7:	Unemployment rates 15-24y and 15-64y, and unemployment/population ratio 15-24y, Austria, Switzerland, Germany, Index country/EU15, 1999-2011	8
A 8:	Unemployment rates 15-24y and 15-64y, and unemployment/population ratio 15-24y, Austria, Switzerland, Germany, EU15, %, 1999-2011	9
A 9:	OECD scoreboard indicators Austria, EU, OECD 2001-2011	10
A 10:	Scoreboard indicators, Austria, EU, and OECD 2011 compared to 2001 (2001=1)	10
A 11:	Scoreboard indicators, Austria and EU 2001, 2011 (EU=1)	11
A 12:	Scoreboard indicators, Austria and OECD 2001, 2011 (OECD=1)	11
A 13:	Percentage 15-29 year-olds in education and not in education (2010)	12
A 14:	Youth in education and not in education, OECD countries, 15-19 years old	14
A 15:	Youth in education and not in education, OECD countries, 20-24 years old	15
A 16:	% Employed among 15-19y and 20-24y old	16
A 17:	% unemployed among 15-19y and 20-24y old	17
A 18:	Youth education and labour market indicators Austria, Switzerland, Germany, EU15, 1999-2011, average available years	18
A 19:	Youth education and labour market indicators Austria, Switzerland, Germany, EU15, 1999-2011, average available years	19
A 20:	Youth education and labour market indicators Austria, Switzerland, Germany, EU15, 1999-2011, average available years	20
A 21:	Youth education and labour market indicators Austria, Switzerland, Germany, EU15, 1999-2011, time series available years, percentage	21
A 22:	Youth education and labour market indicators Austria, Switzerland, Germany, EU15, 1999-2011, time series available years, index EU15=1	22
A 23:	Labour market policy indicators, percentage	24
A 24:	Labour market policy indicators, index (OECD=1)	25
A 25:	15-24y among total access to LMP programmes (2-7) and support (8-9), plausible available years for Austria, Germany and EU15 1997-2011 (Switzerland no figures available)	26
A 26:	LMP Traditions 1998 to 2010	27
A 27:	ALMP as % of GDP 2003, 2008, 2010	27
A 28:	ALMP as % of GDP 2008 and 2010	28
A 29:	Youth (15-24) participants in ALMP as % of young (15-24) labour force, available EU countries, 2008	29
A 30:	GDP Growth in Austria, Switzerland, Germany, EU15, 2003-12	30
A 31:	GDP growth, apprenticeship beginners, apprenticeship market, differences t to t-1, 2002-2011	31
A 32:	GDP growth, youth employment, unemployment, ALMP training, upper secondary, postsecondary and tertiary education, differences t to t-1, 2002-2011	32
A 33:	Sources and links	33

A 1: Youth in education, employment and labour market 2004-2012(11), absolute figures

	2004	2005	2006	2007	2008	2009	2010	2011	2012	2004-07	2010-12(11)
15-19 years											
Population	484771	488087	492738	497839	501117	501647	498402	492093	485740	490859	492078
Labour force	192437	190854	192708	196480	195529	191092	187347	184084	178987	193120	183473
Employment	182890	180932	183728	187963	187016	181194	178147	175438	170572	183878	174719
Unempl.stock	9547	9922	8980	8517	8513	9898	9200	8646	8415	9242	8754
Unempl.incidence	58078	60359	58530	56522	57542	59226	57897	56353	53886	58372	56045
Unempl.inflow	57402	58004	57258	55534	56724	58751	57705	54815	52808	57050	55109
Unempl.outflow	55603	55267	57065	55341	54301	57506	57297	53922	51978	55819	54399
ALMPtr.stock	9540	10882	12304	11974	11548	13973	15903	14746	14025	11175	14891
ALMPtr.duration*	132	143	140	156	154	154	170	172	157	143	166
ALMPtr.inflow	28676	28928	34452	29373	29188	36477	35898	32415	34713	30357	34342
ALMP tr.outflow	24066	26518	29842	26664	25726	29749	32356	30198	30683	26773	31079
Appr. (all)	119077	122378	125961	129823	131880	131676	129899	128078	125228	124310	127735
Appr.seekers (all)	5375	6156	6099	5689	5695	5944	5752	5504	5531	5830	5596
Appr.places (all)	2356	2900	3611	3546	3633	3279	3431	3650	3824	3103	3635
Appr.beginners	36763	38630	40032	41180	40517	39131	38988	38485	36980	39151	38151
Appr.1st y.beg.	33734	35598	36606	37886	36905	35824	35774	35295	33994	35956	35021
Population 16y	96673	97691	98123	100006	100904	100083	98268	95075	94476	98123	95940
Part time school apprentices (all)	125000	128300	133600	136200	140400	140300	137900	134300		130775	136100
Full time school UPSEC total (all)	315900	320100	322800	323800	322600	327900	326100	325900		320650	326000
Fts low/medium l	80600	79300	77300	76500	74600	76400	72400	70600		78425	71500
Fts upper l	217700	223200	226500	228600	229300	231200	232300	234300		224000	233300
Fts health occ.	17600	17600	19000	18700	18700	20300	21400	21000		18225	21200
TERT+POSTSEC (15-19y)	19736	19668	19818	20586	20988	22707	23328	23549		19952	23439
20-24 years											
Population	516052	525275	524196	520057	519599	520464	521233	526801	534758	521395	527597
Labour Force	343174	347781	347824	349204	348385	341290	338894	346195	352611	346996	345900
Employment	313973	316135	318709	322580	322829	308280	308010	315994	320731	317849	314912
Unempl.stock	29201	31646	29115	26624	25556	33010	30884	30201	31880	29147	30988
Unempl.incidence	152262	162687	156279	149504	150451	172124	165774	162108	166231	155183	164705
Unempl.inflow	154601	160199	159299	150857	152842	171199	167158	162665	166777	156239	165533
Unempl.outflow	168658	173982	179854	170572	165619	190581	190555	180209	183933	173267	184899
ALMPtr. Stock	7720	7954	9425	8020	7748	10882	12113	10398	10996	8280	11169
ALMPtr.duration*	84	86	86	90	92	90	100	98	90	87	96
ALMPtr. Inflow	34446	34046	41046	32662	31525	46631	44634	38507	46045	35550	43062
ALMPtr. Outflow	32273	33108	39260	32501	30142	41290	43844	38800	43367	34286	42004
TERT+POSTSEC (20-24y)	102401	103436	103677	101567	101774	109185	112141	115636		102770	113889
SCHOOL EDUCATION										04/5-07/8	10/11-11/12
Ed UPPER SEC	440900	448400	456400	460000	463000	468200	464000	460200		451425	462100
Pts apprentices	125000	128300	133600	136200	140400	140300	137900	134300		130775	136100
Fts total (9-13)	315900	320100	322800	323800	322600	327900	326100	325900		320650	326000
Fts low+med+hlth	98200	96900	96300	95200	93300	96700	93800	91600		96650	92700
<i>Prep.school (9)</i>	21800	22300	21400	21300	20600	19300	18800	18000		21700	18400
<i>Med.lev.VET</i>	58800	57000	55900	55200	54000	57100	53600	52600		56725	53100
<i>Health schools</i>	17600	17600	19000	18700	18700	20300	21400	21000		18225	21200
Fts upper level	217700	223200	226500	228600	229300	231200	232300	234300		224000	233300
<i>Academic</i>	76700	80200	82800	83600	84000	83800	84200	86000		80825	85100
<i>VET coll+teach</i>	141000	143000	143700	145000	145300	147400	148100	148300		143175	148200

Source: BMASK Bali web (population, employment, unemployment, ALMP, apprenticeship), Statistics

Austria, BMUKK, BMWF data warehouse (education); *ALMP training duration: days estimated

A 2: Youth in education, employment and labour market 2004-2012(11), % of population

	2004	2005	2006	2007	2008	2009	2010	2011	2012	2004-07	2010-12(11)
15-19 years											
Population	100%	100%	100%	100%	100%	100%	100%	100%	100%	100%	100%
Labour force	40%	39%	39%	39%	39%	38%	38%	37%	37%	39%	37%
Employment	38%	37%	37%	38%	37%	36%	36%	36%	35%	37%	36%
Unempl.stock	2%	2%	2%	2%	2%	2%	2%	2%	2%	2%	2%
Unempl.incidence	12%	12%	12%	11%	11%	12%	12%	11%	11%	12%	11%
Unempl.inflow	12%	12%	12%	11%	11%	12%	12%	11%	11%	12%	11%
Unempl.outflow	11%	11%	12%	11%	11%	11%	11%	11%	11%	11%	11%
ALMPtr.stock	2%	2%	2%	2%	2%	3%	3%	3%	3%	2%	3%
ALMPtr.duration*											
ALMPtr.inflow	6%	6%	7%	6%	6%	7%	7%	7%	7%	6%	7%
ALMP tr.outflow	5%	5%	6%	5%	5%	6%	6%	6%	6%	5%	6%
Appr. (all)	25%	25%	26%	26%	26%	26%	26%	26%	26%	25%	26%
Appr.seekers (all)	1%	1%	1%	1%	1%	1%	1%	1%	1%	1%	1%
Appr.places (all)	0%	1%	1%	1%	1%	1%	1%	1%	1%	1%	1%
Appr.beginners	8%	8%	8%	8%	8%	8%	8%	8%	8%	8%	8%
Appr.1st y.beg.	7%	7%	7%	8%	7%	7%	7%	7%	7%	7%	7%
Population 16y	20%	20%	20%	20%	20%	20%	20%	19%	19%	20%	19%
Part time school	26%	26%	27%	27%	28%	28%	28%	27%		27%	28%
Full time school	65%	66%	66%	65%	64%	65%	65%	66%		65%	66%
Fts low/medium l	17%	16%	16%	15%	15%	15%	15%	14%		16%	15%
Fts upper l	45%	46%	46%	46%	46%	46%	47%	48%		46%	47%
Fts health occ.	4%	4%	4%	4%	4%	4%	4%	4%		4%	4%
TERT+POSTSEC	4%	4%	4%	4%	4%	5%	5%	5%		4%	5%
20-24 years											
Population	100%	100%	100%	100%	100%	100%	100%	100%	100%	100%	100%
Labour Force	66%	66%	66%	67%	67%	66%	65%	66%	66%	67%	66%
Employment	61%	60%	61%	62%	62%	59%	59%	60%	60%	61%	60%
Unempl.stock	6%	6%	6%	5%	5%	6%	6%	6%	6%	6%	6%
Unempl.incidence	30%	31%	30%	29%	29%	33%	32%	31%	31%	30%	31%
Unempl.inflow	30%	30%	30%	29%	29%	33%	32%	31%	31%	30%	31%
Unempl.outflow	33%	33%	34%	33%	32%	37%	37%	34%	34%	33%	35%
ALMPtr. Stock	1%	2%	2%	2%	1%	2%	2%	2%	2%	2%	2%
ALMPtr.duration*											
ALMPtr. Inflow	7%	6%	8%	6%	6%	9%	9%	7%	9%	7%	8%
ALMPtr. Outflow	6%	6%	7%	6%	6%	8%	8%	7%	8%	7%	8%
TERT+POSTSEC	20%	20%	20%	20%	20%	21%	22%	22%		20%	22%
SCHOOL EDUCATION										04/5-07/8	10/11-11/12
Ed UPPER SEC	91%	92%	93%	92%	92%	93%	93%	94%		92%	94%
Pts apprentices	26%	26%	27%	27%	28%	28%	28%	27%		27%	28%
Fts total (9-13)	65%	66%	66%	65%	64%	65%	65%	66%		65%	66%
Fts low+med+hlth	20%	20%	20%	19%	19%	19%	19%	19%		20%	19%
<i>Prep.school (9)</i>	4%	5%	4%	4%	4%	4%	4%	4%		4%	4%
<i>Med.lev.VET</i>	12%	12%	11%	11%	11%	11%	11%	11%		12%	11%
<i>Health schools</i>	4%	4%	4%	4%	4%	4%	4%	4%		4%	4%
Fts upper level	45%	46%	46%	46%	46%	46%	47%	48%		46%	47%
<i>Academic</i>	16%	16%	17%	17%	17%	17%	17%	17%		16%	17%
<i>VET coll+teach</i>	29%	29%	29%	29%	29%	29%	30%	30%		29%	30%

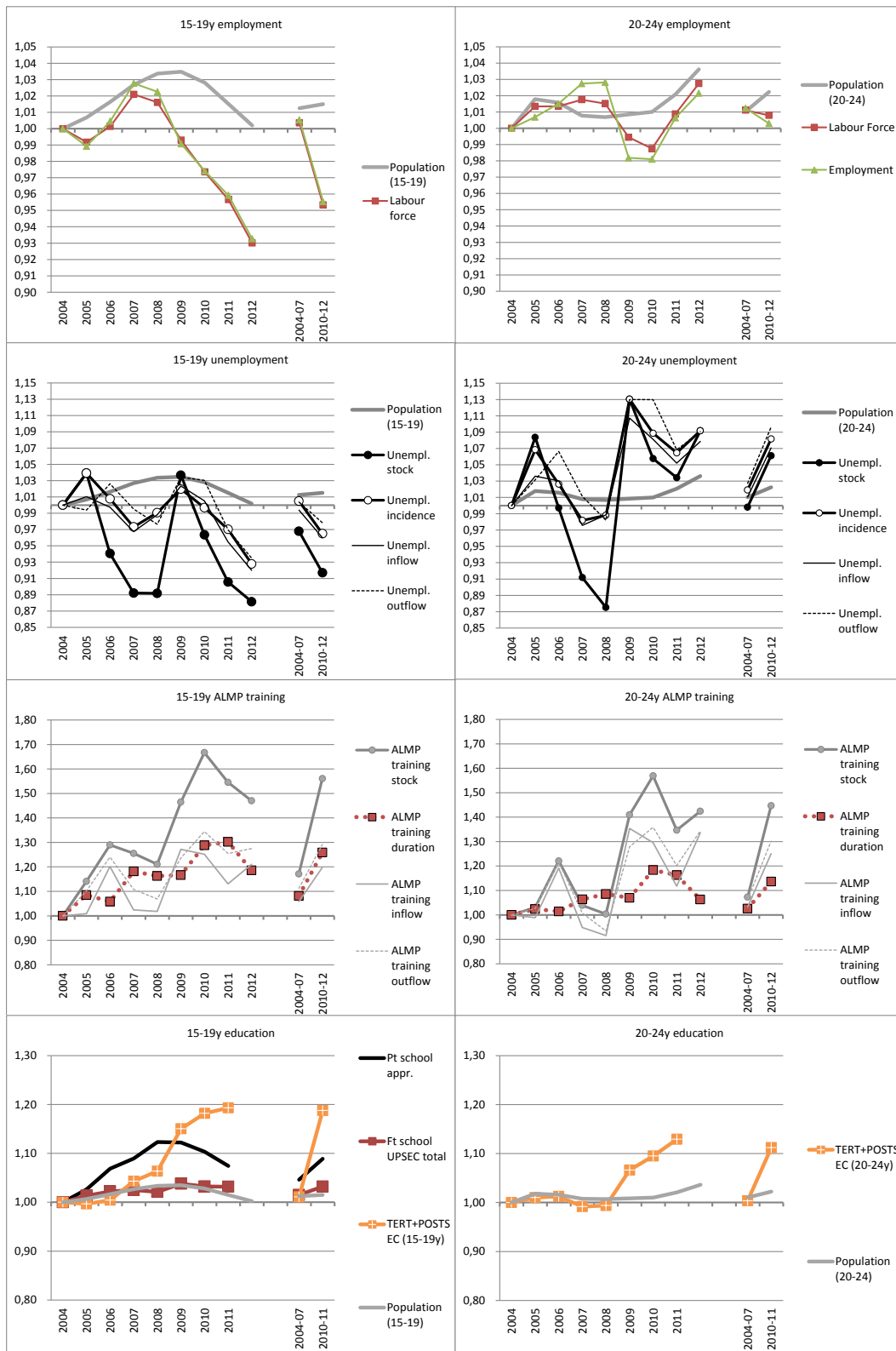
Source: BMASK Bali web (population, employment, unemployment, ALMP, apprenticeship), Statistics Austria, BMUKK, BMWF data warehouse (education); *ALMP training duration: days estimated

A 3: Youth in education, employment and labour market 2004-2012(11), Index 2004=1

	2004	2005	2006	2007	2008	2009	2010	2011	2012	2004-07	2010-12(11)
15-19 years											
Population	1,00	1,01	1,02	1,03	1,03	1,03	1,03	1,02	1,00	1,01	1,02
Labour force	1,00	0,99	1,00	1,02	1,02	0,99	0,97	0,96	0,93	1,00	0,95
Employment	1,00	0,99	1,00	1,03	1,02	0,99	0,97	0,96	0,93	1,01	0,96
Unempl.stock	1,00	1,04	0,94	0,89	0,89	1,04	0,96	0,91	0,88	0,97	0,92
Unempl.incidence	1,00	1,04	1,01	0,97	0,99	1,02	1,00	0,97	0,93	1,01	0,97
Unempl.inflow	1,00	1,01	1,00	0,97	0,99	1,02	1,01	0,95	0,92	0,99	0,96
Unempl.outflow	1,00	0,99	1,03	1,00	0,98	1,03	1,03	0,97	0,93	1,00	0,98
ALMPtr.stock	1,00	1,14	1,29	1,26	1,21	1,46	1,67	1,55	1,47	1,17	1,56
ALMPtr.duration*	1,00	1,09	1,06	1,18	1,16	1,17	1,29	1,30	1,19	1,08	1,26
ALMPtr.inflow	1,00	1,01	1,20	1,02	1,02	1,27	1,25	1,13	1,21	1,06	1,20
ALMP tr.outflow	1,00	1,10	1,24	1,11	1,07	1,24	1,34	1,25	1,27	1,11	1,29
Appr. (all)	1,00	1,03	1,06	1,09	1,11	1,11	1,09	1,08	1,05	1,04	1,07
Appr.seekers (all)	1,00	1,15	1,13	1,06	1,06	1,11	1,07	1,02	1,03	1,08	1,04
Appr.places (all)	1,00	1,23	1,53	1,51	1,54	1,39	1,46	1,55	1,62	1,32	1,54
Appr.beginners	1,00	1,05	1,09	1,12	1,10	1,06	1,06	1,05	1,01	1,06	1,04
Appr.1st y.beg.	1,00	1,06	1,09	1,12	1,09	1,06	1,06	1,05	1,01	1,07	1,04
Population 16y	1,00	1,01	1,01	1,03	1,04	1,04	1,02	0,98	0,98	1,02	0,99
Part time school	1,00	1,03	1,07	1,09	1,12	1,12	1,10	1,07		1,05	1,09
Full time school	1,00	1,01	1,02	1,03	1,02	1,04	1,03	1,03		1,02	1,03
Fts low/medium l	1,00	0,98	0,96	0,95	0,93	0,95	0,90	0,88		0,97	0,89
Fts upper l	1,00	1,03	1,04	1,05	1,05	1,06	1,07	1,08		1,03	1,07
Fts health occ.	1,00	1,00	1,08	1,06	1,06	1,15	1,22	1,19		1,04	1,20
TERT+POSTSEC	1,00	1,00	1,00	1,04	1,06	1,15	1,18	1,19		1,01	1,19
20-24 years											
Population	1,00	1,02	1,02	1,01	1,01	1,01	1,01	1,02	1,04	1,01	1,02
Labour Force	1,00	1,01	1,01	1,02	1,02	0,99	0,99	1,01	1,03	1,01	1,01
Employment	1,00	1,01	1,02	1,03	1,03	0,98	0,98	1,01	1,02	1,01	1,00
Unempl.stock	1,00	1,08	1,00	0,91	0,88	1,13	1,06	1,03	1,09	1,00	1,06
Unempl.incidence	1,00	1,07	1,03	0,98	0,99	1,13	1,09	1,06	1,09	1,02	1,08
Unempl.inflow	1,00	1,04	1,03	0,98	0,99	1,11	1,08	1,05	1,08	1,01	1,07
Unempl.outflow	1,00	1,03	1,07	1,01	0,98	1,13	1,13	1,07	1,09	1,03	1,10
ALMPtr. Stock	1,00	1,03	1,22	1,04	1,00	1,41	1,57	1,35	1,42	1,07	1,45
ALMPtr.duration*	1,00	1,02	1,01	1,06	1,09	1,07	1,18	1,16	1,06	1,03	1,14
ALMPtr. Inflow	1,00	0,99	1,19	0,95	0,92	1,35	1,30	1,12	1,34	1,03	1,25
ALMPtr. Outflow	1,00	1,03	1,22	1,01	0,93	1,28	1,36	1,20	1,34	1,06	1,30
TERT+POSTSEC	1,00	1,01	1,01	0,99	0,99	1,07	1,10	1,13		1,00	1,11
SCHOOL EDUCATION											
	2004/05	2005/06	2006/07	2007/08	2008/09	2009/10	2010/11	2011/12		04/5-07/8	10/11-11/12
Ed UPPER SEC	1,00	1,02	1,04	1,04	1,05	1,06	1,05	1,04		1,02	1,05
Pts apprentices	1,00	1,03	1,07	1,09	1,12	1,12	1,10	1,07		1,05	1,09
Fts total (9-13)	1,00	1,01	1,02	1,03	1,02	1,04	1,03	1,03		1,02	1,03
Fts low+med+hlth	1,00	0,99	0,98	0,97	0,95	0,98	0,96	0,93		0,98	0,94
<i>Prep.school (9)</i>	1,00	1,02	0,98	0,98	0,94	0,89	0,86	0,83		1,00	0,84
<i>Med.lev.VET</i>	1,00	0,97	0,95	0,94	0,92	0,97	0,91	0,89		0,96	0,90
<i>Health schools</i>	1,00	1,00	1,08	1,06	1,06	1,15	1,22	1,19		1,04	1,20
Fts upper level	1,00	1,03	1,04	1,05	1,05	1,06	1,07	1,08		1,03	1,07
<i>Academic</i>	1,00	1,05	1,08	1,09	1,10	1,09	1,10	1,12		1,05	1,11
<i>VET coll+teach</i>	1,00	1,01	1,02	1,03	1,03	1,05	1,05	1,05		1,02	1,05

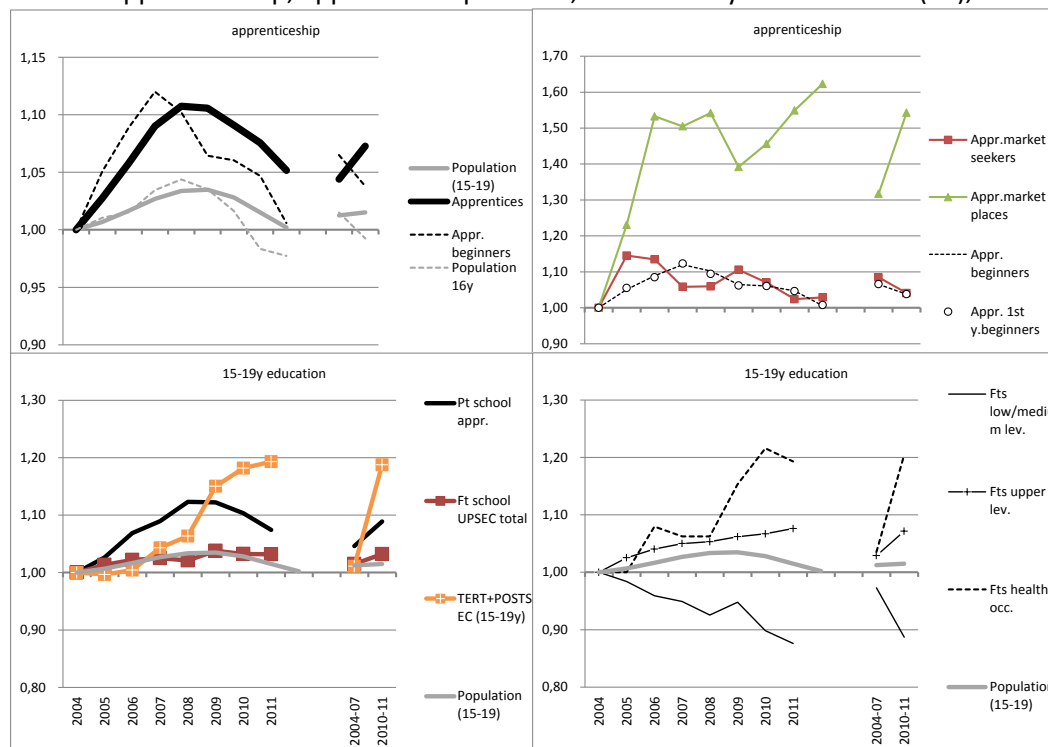
Source: BMASK Bali web (population, employment, unemployment, ALMP, apprenticeship), Statistics Austria, BMUKK, BMWF data warehouse (education); *ALMP training duration: days estimated

A 4: Youth in education, employment and labour market 2004-2012(11), Index 2004=1



Source: BMASK Bali web (population, employment, unemployment, ALMP, apprenticeship), Statistics Austria, BMUKK, BMWF data warehouse (education); *ALMP training duration: days estimated

A 5: Apprenticeship, apprenticeship market, education by levels 2004-12(11), Index 2004=1



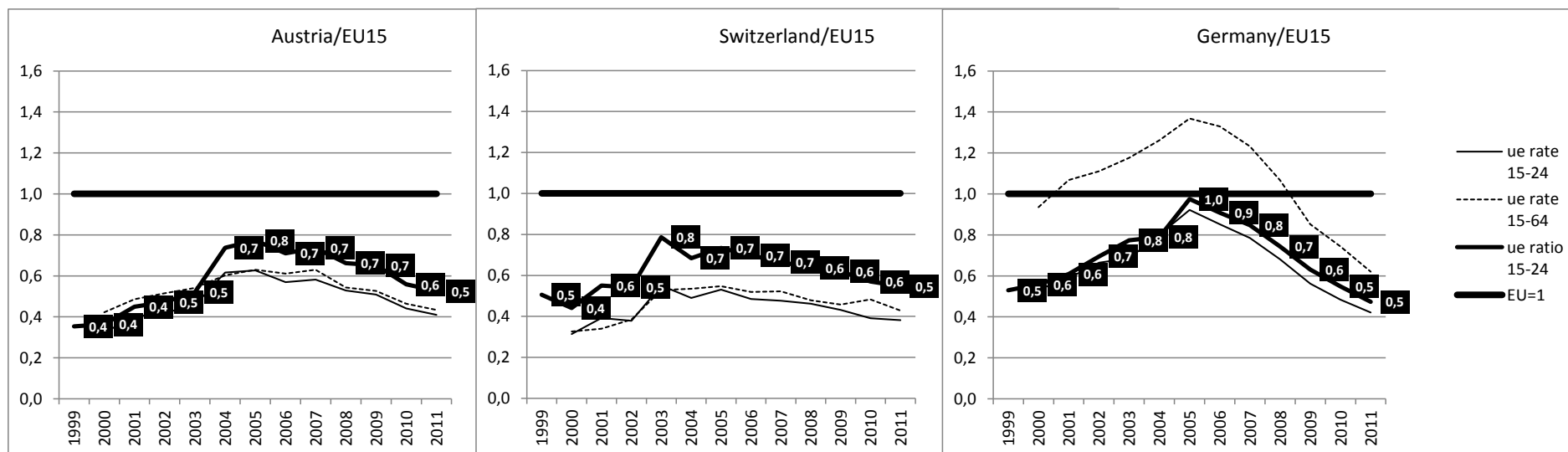
Source: BMASK Bali web (population, apprenticeship), Statistics Austria, BMUKK, BMWF data warehouse (education); *ALMP training duration: days estimated

A 6: Support of Apprenticeship 2004-11, absolute and %

	2004	2005	2006	2007	2008	2009	2010	2011	2012	2004-07	2010-12(11)
ABSOLUTE											
Pop. (15-19y)	484771	488087	492738	497839	501117	501647	498402	492093	485740	490859	492078
Apprenticeships	119077	122378	125961	129823	131880	131676	129899	128078	125228	124310	127735
Appr. beginners	36763	38630	40032	41180	40517	39131	38988	38485	36980	39151	38151
Support of regular apprenticeships											
stock	3860	6534	17027	28315	30817	20586	11646	6905		13934	9276
inflow	8468	18036	30861	45117	42538	31892	21436	13899		25621	17668
Institutional apprenticeships											
inflow	14228	14550	16489	16220	17279	18416	22940	29552		15372	26246
Sum infl.reg+inst	22696	32586	47350	61337	59817	50308	44376	43451		40992	43914
% of population 15-19y: Support of regular apprenticeships											
Stock	1%	1%	3%	6%	6%	4%	2%	1%		3%	2%
Inflow	2%	4%	6%	9%	8%	6%	4%	3%		5%	4%
Institutional apprenticeships											
Inflow	3%	3%	3%	3%	3%	4%	5%	6%		3%	5%
Sum infl.reg+inst	5%	7%	10%	12%	12%	10%	9%	9%		8%	9%
% of apprenticeships: Support of regular apprenticeships											
Stock	3%	5%	14%	22%	23%	16%	9%	5%		11%	7%
Inflow	7%	15%	25%	35%	32%	24%	17%	11%		21%	14%
Institutional apprenticeships											
Inflow	12%	12%	13%	12%	13%	14%	18%	23%		12%	21%
Sum infl.reg+inst	19%	27%	38%	47%	45%	38%	34%	34%		33%	34%

Source: BMASK 2012, Aktive Arbeitsmarktpolitik in Österreich, Tab.23 and 24, pp.185 and 186.

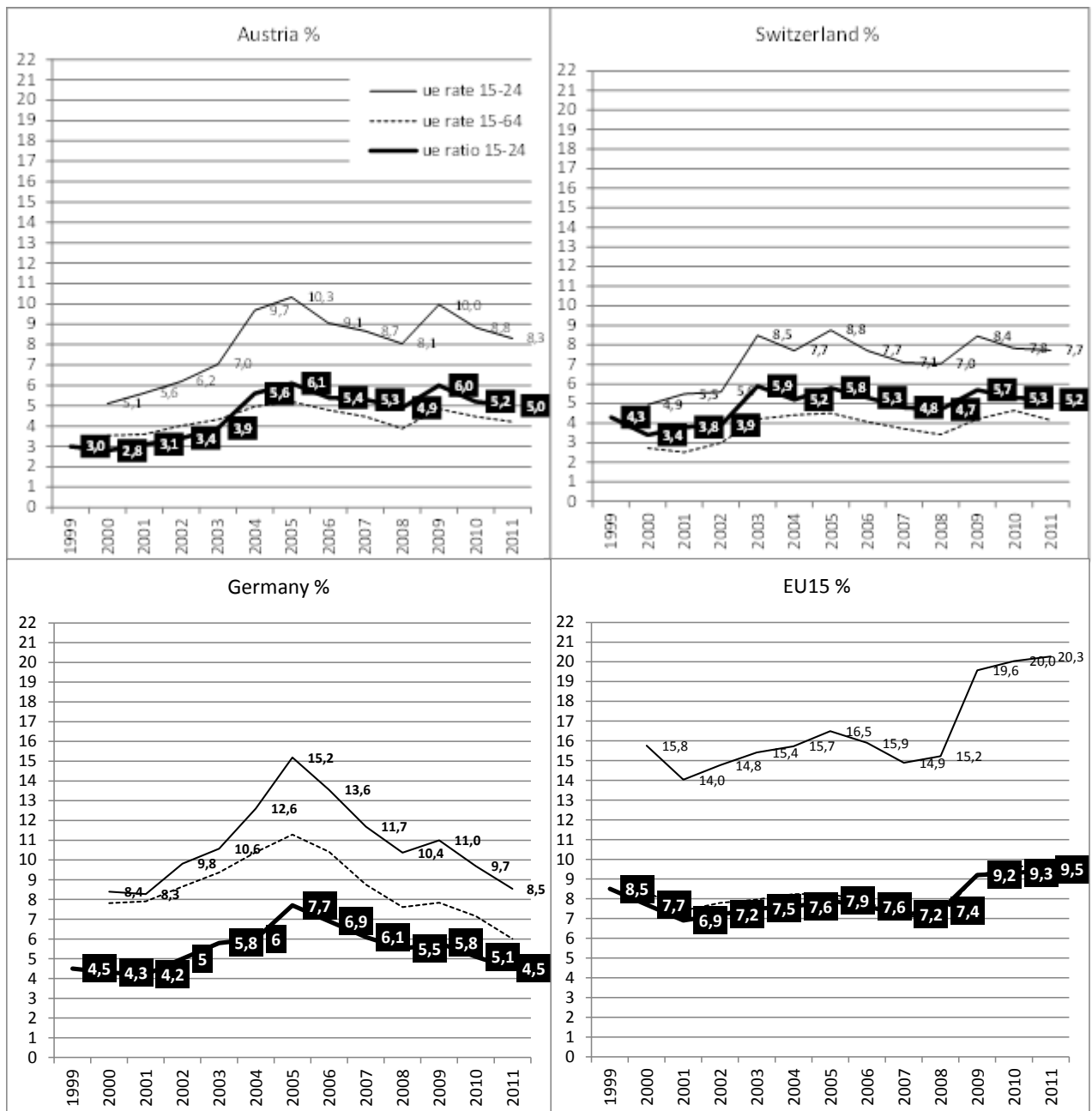
A 7: Unemployment rates 15-24y and 15-64y, and unemployment/population ratio 15-24y, Austria, Switzerland, Germany, Index country/EU15, 1999-



Percentage		1999	2000	2001	2002	2003	2004	2005	2006	2007	2008	2009	2010	2011
Austria	ue rate 15-24		5,1	5,6	6,2	7,0	9,7	10,3	9,1	8,7	8,1	10,0	8,8	8,3
	ue rate 15-64		3,5	3,6	4,0	4,3	5,0	5,2	4,8	4,5	3,9	4,8	4,5	4,2
	ue ratio 15-24	3,0	2,8	3,1	3,4	3,9	5,6	6,1	5,4	5,3	4,9	6,0	5,2	5,0
Germany	ue rate 15-24		8,4	8,3	9,8	10,6	12,6	15,2	13,6	11,7	10,4	11,0	9,7	8,5
	ue rate 15-64		7,8	7,9	8,7	9,4	10,4	11,3	10,4	8,7	7,6	7,8	7,2	6,0
	ue ratio 15-24	4,5	4,3	4,2	5,0	5,8	6,0	7,7	6,9	6,1	5,5	5,8	5,1	4,5
Switzerland	ue rate 15-24		4,9	5,5	5,6	8,5	7,7	8,8	7,7	7,1	7,0	8,4	7,8	7,7
	ue rate 15-64		2,7	2,5	3,0	4,2	4,4	4,5	4,1	3,7	3,4	4,2	4,6	4,2
	ue ratio 15-24	4,3	3,4	3,8	3,9	5,9	5,2	5,8	5,3	4,8	4,7	5,7	5,3	5,2
EU15	ue rate 15-24		15,8	14,0	14,8	15,4	15,7	16,5	15,9	14,9	15,2	19,6	20,0	20,3
	ue rate 15-64		8,4	7,4	7,8	8,0	8,2	8,2	7,8	7,1	7,1	9,2	9,6	9,7
	ue ratio 15-24	8,5	7,7	6,9	7,2	7,5	7,6	7,9	7,6	7,2	7,4	9,2	9,3	9,5

Source: OECD (rates), EUROSTAT (ratio), own figures, calculations

A 8: Unemployment rates 15-24y and 15-64y, and unemployment/population ratio 15-24y, Austria, Switzerland, Germany, EU15, %, 1999-2011



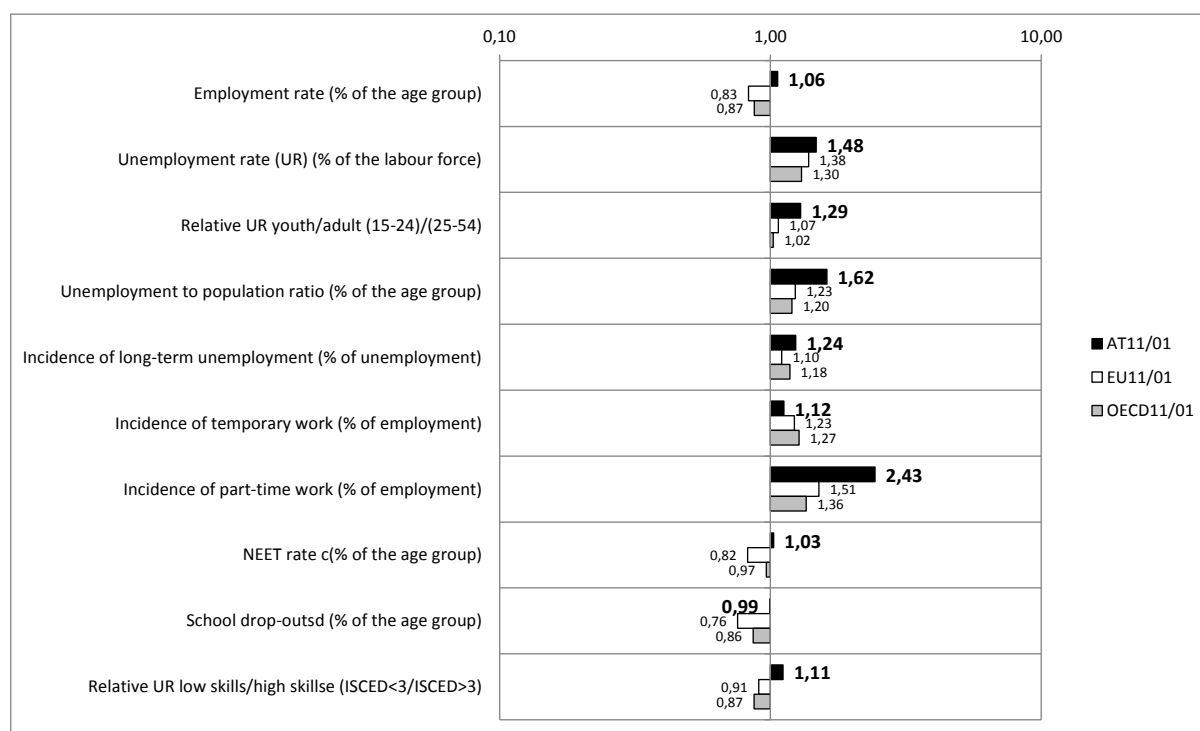
Source: OECD (rates), EUROSTAT (ratio), own figures, calculations

A 9: OECD scoreboard indicators Austria, EU, OECD 2001-2011

	AT	EU	OE CD	AT	EU	OE CD	AT/ EU 01	AT/ EU 11	AT/ O 01	AT/ O 11	AT 11/ 01	EU 11/ 01	O 11/ 01
ER Employment rate (% of age group)	51,6	40,2	43,3	54,9	33,4	37,8	1,28	1,65	1,19	1,45	1,06	0,83	0,87
UR Unemployment rate (% of LF)	5,6	16,5	14,5	8,3	22,8	19,0	0,34	0,36	0,39	0,44	1,48	1,38	1,30
UR youth/adult (15-24)/(25-54)	1,8	2,5	2,6	2,3	2,7	2,7	0,70	0,85	0,69	0,87	1,29	1,07	1,02
Unemployment ratio (% of age group)	3,1	7,3	6,7	5,0	9,0	8,1	0,42	0,55	0,46	0,62	1,62	1,23	1,20
Long-term UE (% of UE)	11,4	25,4	18,7	14,1	28,0	22,1	0,45	0,50	0,61	0,64	1,24	1,10	1,18
Temporary work (% of employment)	33,2	33,1	30,0	37,2	40,6	38,2	1,00	0,92	1,11	0,97	1,12	1,23	1,27
Part-time work (% of employment)	6,8	16,8	20,6	16,4	25,4	27,9	0,40	0,65	0,33	0,59	2,43	1,51	1,36
NEET (% of age group)	9,0	13,6	13,2	9,2	11,2	12,8	0,66	0,82	0,68	0,72	1,03	0,82	0,97
ESL (% of age group)	10,8	19,9	22,7	10,7	15,1	19,6	0,54	0,71	0,48	0,55	0,99	0,76	0,86
Rel. UR low/high skills (ISCED<3/>3)	1,3	2,6	2,5	1,5	2,3	2,2	0,53	0,65	0,54	0,69	1,11	0,91	0,87

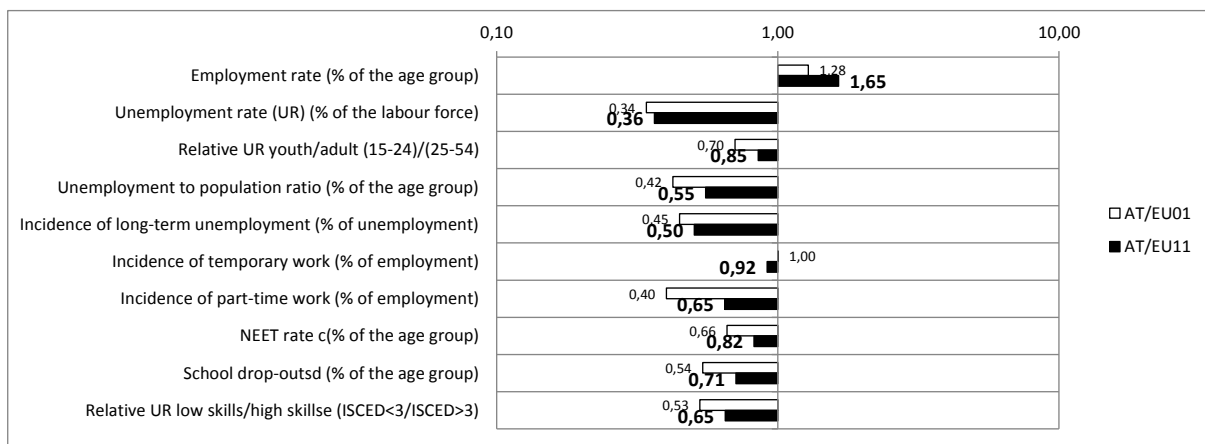
Source: OECD, Employment policies and data, Online OECD Employment database, Scoreboard on youth aged 15-24 <http://www.oecd.org/els/employmentpoliciesanddata/scoreboard%20EN.xlsx>

A 10: Scoreboard indicators, Austria, EU, and OECD 2011 compared to 2001 (2001=1)

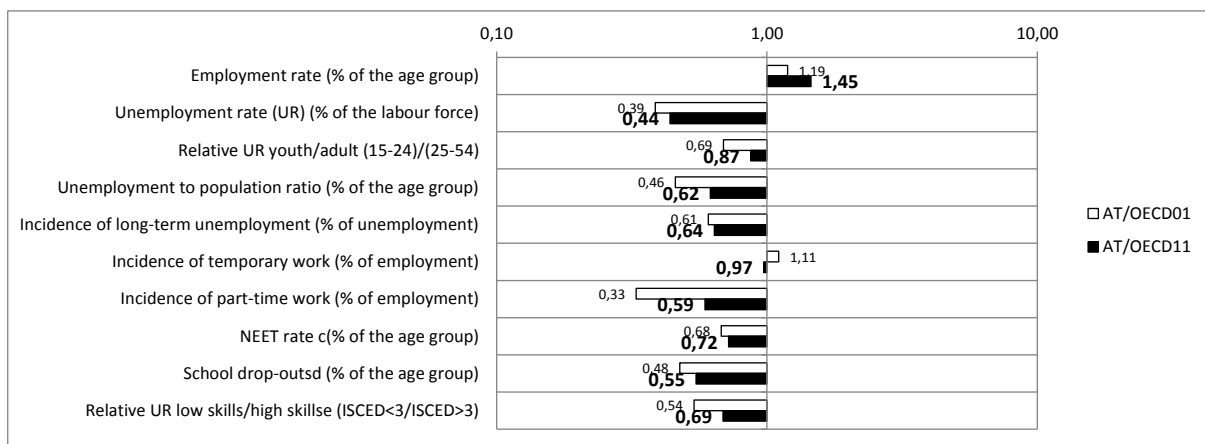


Source: OECD Scoreboard

A 11: Scoreboard indicators, Austria and EU 2001, 2011 (EU=1)



A 12: Scoreboard indicators, Austria and OECD 2001, 2011 (OECD=1)



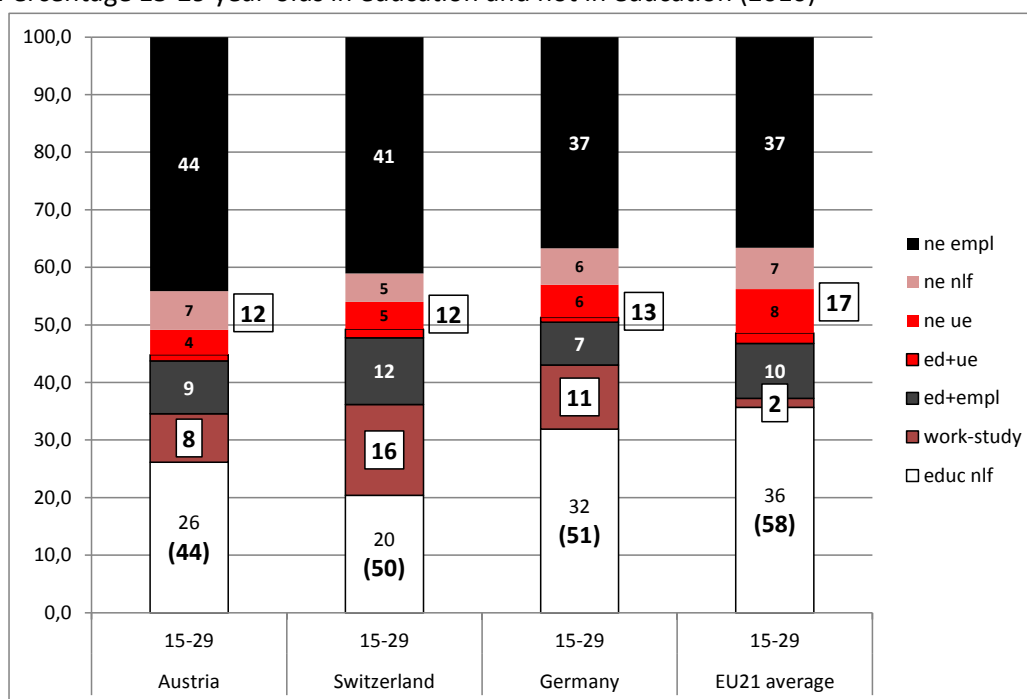
Source: OECD-scoreboard

A 13: Percentage 15-29 year-olds in education and not in education (2010)

Age group	IN EDUCATION					NOT IN EDUCATION					
	Educ & not in LF	Work-study progr	Educ & other empl.	Educ & un-empl	IN EDUC	Empl	Un-empl	Not in LF	NOT IN EDUC		
Austria	15-19	56,3	23,8	5,5	1,0	86,6	8,1	3,2	2,1	13,4	100
	20-24	20,0	2,5	10,5	1,4	34,4	53,0	5,4	7,2	65,6	100
	25-29	5,2	0,3	11,2	0,8	17,5	67,8	4,4	10,3	82,5	100
	15-29	26,1	8,4	9,2	1,1	44,8	44,1	4,3	6,7	55,2	100
Switzerland	15-19	42,1	37,2	6,8	2,4	88,5	6,7	2,1	2,6	11,5	100
	20-24	16,0	11,1	17,2	1,6	45,8	43,1	6,3	4,8	54,2	100
	25-29	5,0	1,0	10,6	0,7	17,2	70,0	5,6	7,2	82,8	100
	15-29	20,4	15,8	11,6	1,5	49,3	41,1	4,7	5,0	50,7	100
Germany	15-19	67,9	16,5	6,7	1,2	92,3	4,1	2,0	1,7	7,7	100
	20-24	23,3	15,1	8,2	0,9	47,5	38,8	7,1	6,6	52,5	100
	25-29	8,1	2,4	7,3	0,5	18,3	63,9	7,5	10,2	81,7	100
	15-29	31,9	11,1	7,4	0,9	51,3	36,7	5,7	6,3	48,7	100
EU21 average	15-19	75,0	(1,3)*	9,9	2,9	89,4	4,4	3,0	3,5	10,6	100
	20-24	31,8	(0,9)*	11,6	2,4	46,8	35,8	10,0	7,5	53,2	100
	25-29	6,2	(0,2)*	7,9	1,2	15,4	65,2	9,4	10,0	84,6	100
	15-29	35,7	(1,6)*	9,5	1,8	48,6	36,6	7,6	7,2	51,4	100

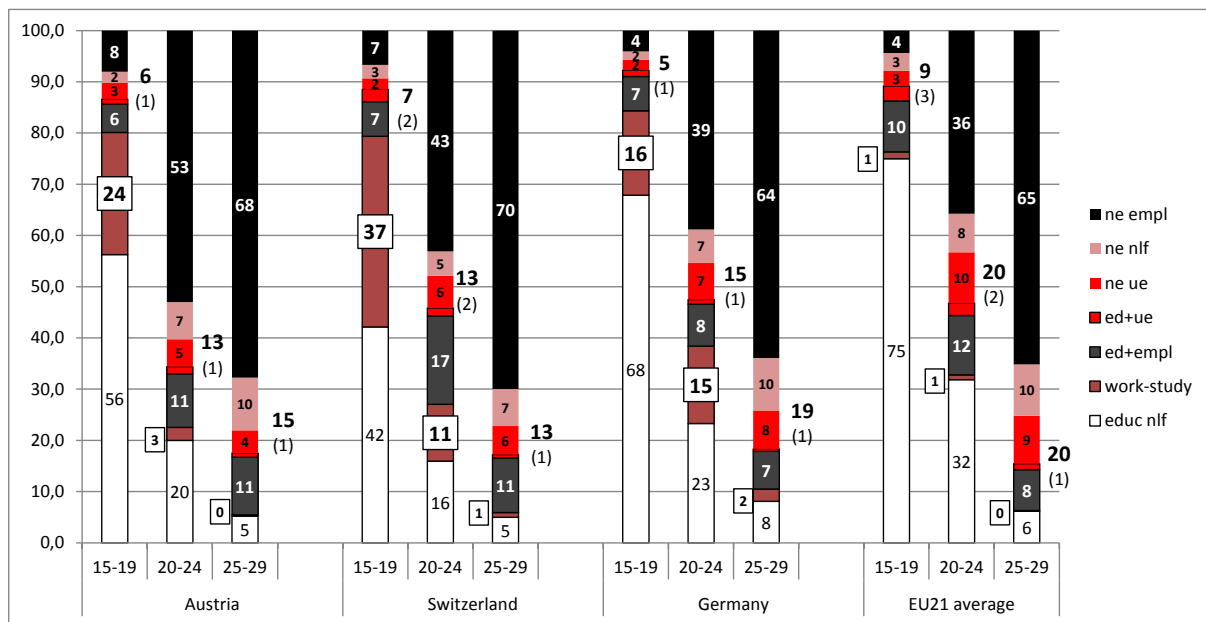
Source: OECD, EAG 2012, Indicator C5, Table C5.2a, *estimated: Difference to 100% (max. 7 countries with values: Austria, Belgium, Czech Republic, Germany, Italy, Slovak Republic, United Kingdom)

Percentage 15-29 year-olds in education and not in education (2010)



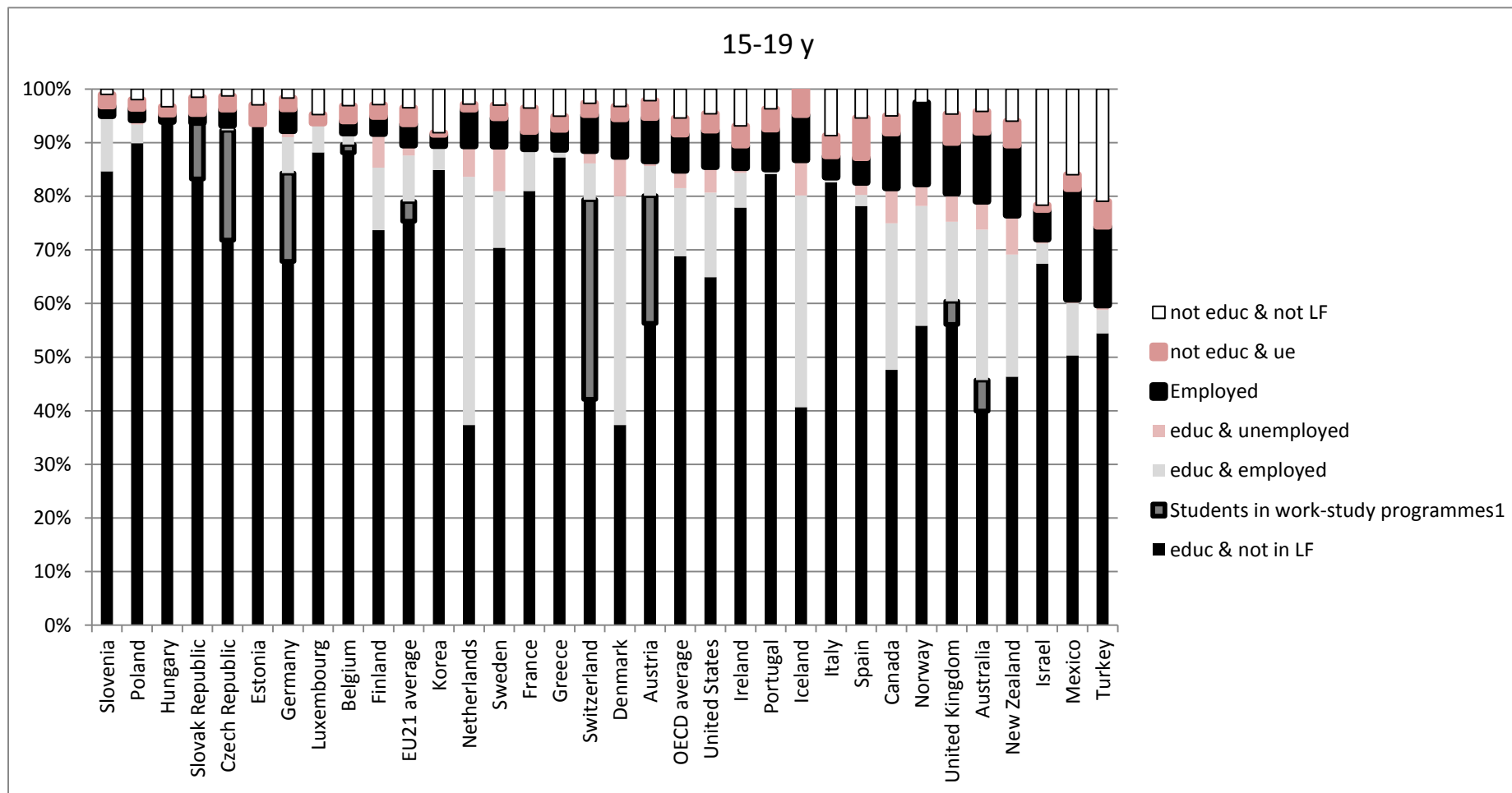
Source: EAG 2012, own figure and calculation

Percentage 15-29 year-olds in education and not in education, by age groups (2010)



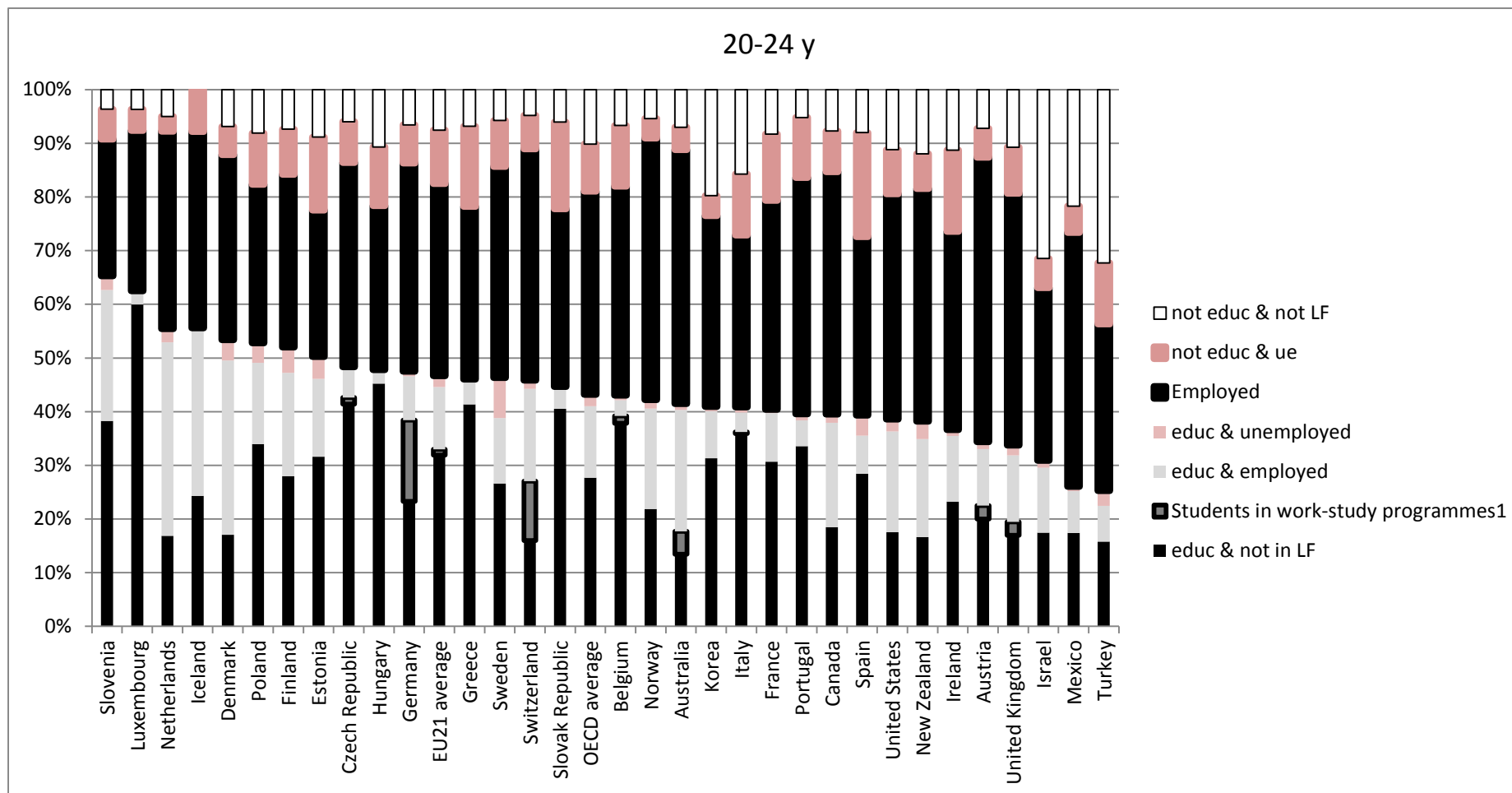
Source: EAG 2012, own figure and calculation

A 14: Youth in education and not in education, OECD countries, 15-19 years old



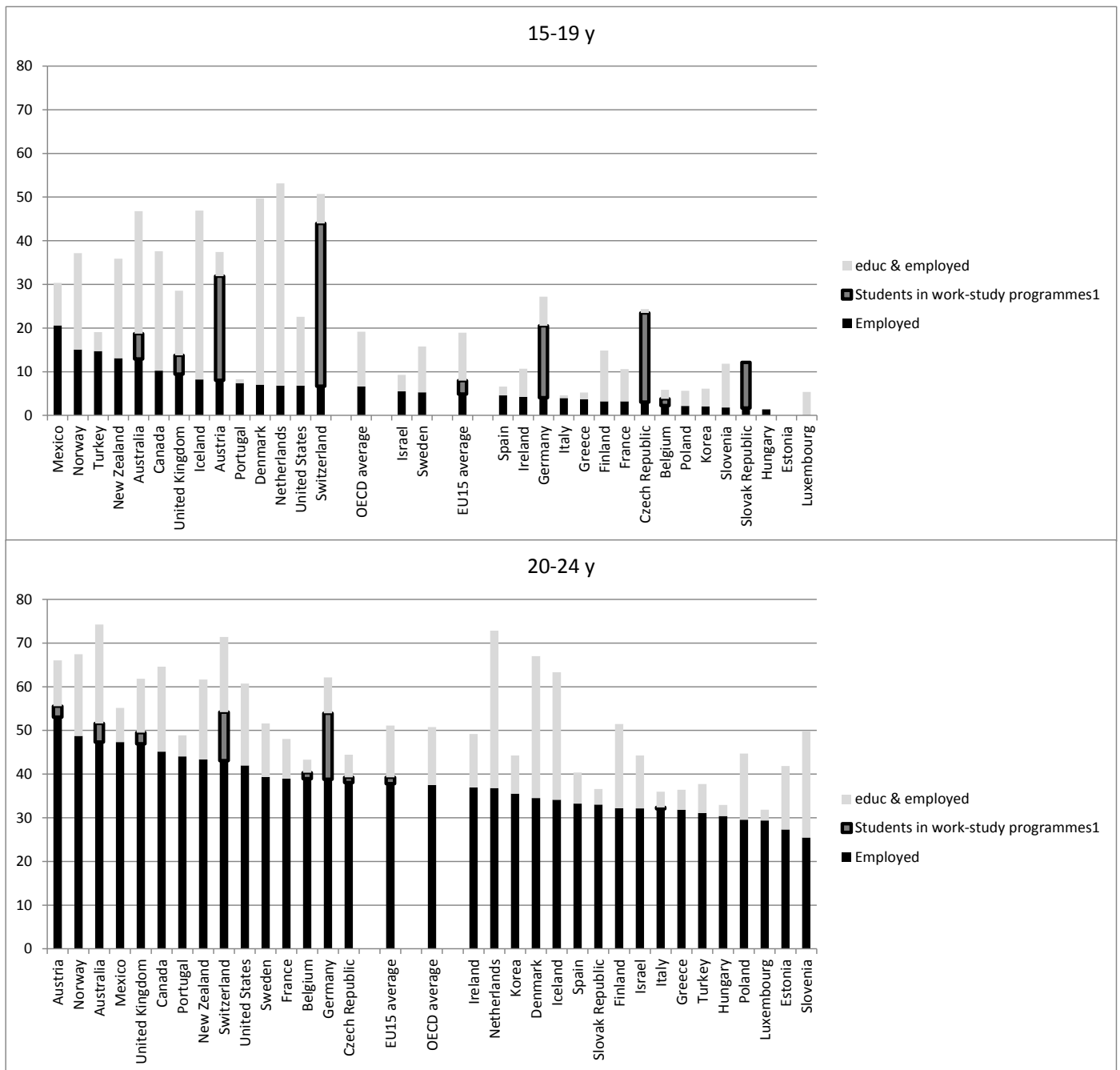
Source: OECD, EAG 2012, Indicator C5, Table C5.2a. Percentage of 15-29 year-olds in education and not in education, by 5-year age group and work status, own figure, calculation, sorted by sub-total in education

A 15: Youth in education and not in education, OECD countries, 20-24 years old

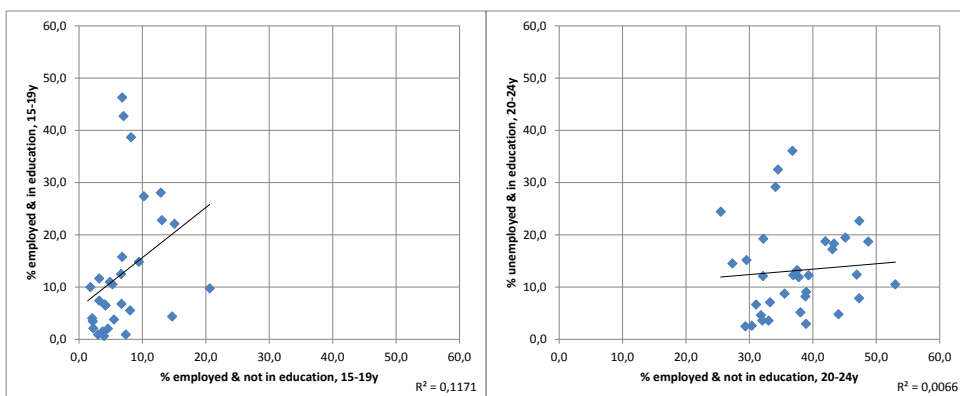


Source: OECD, EAG 2012, Indicator C5, Table C5.2a. Percentage of 15-29 year-olds in education and not in education, by 5-year age group and work status, own figure, calculation, sorted by sub-total in education

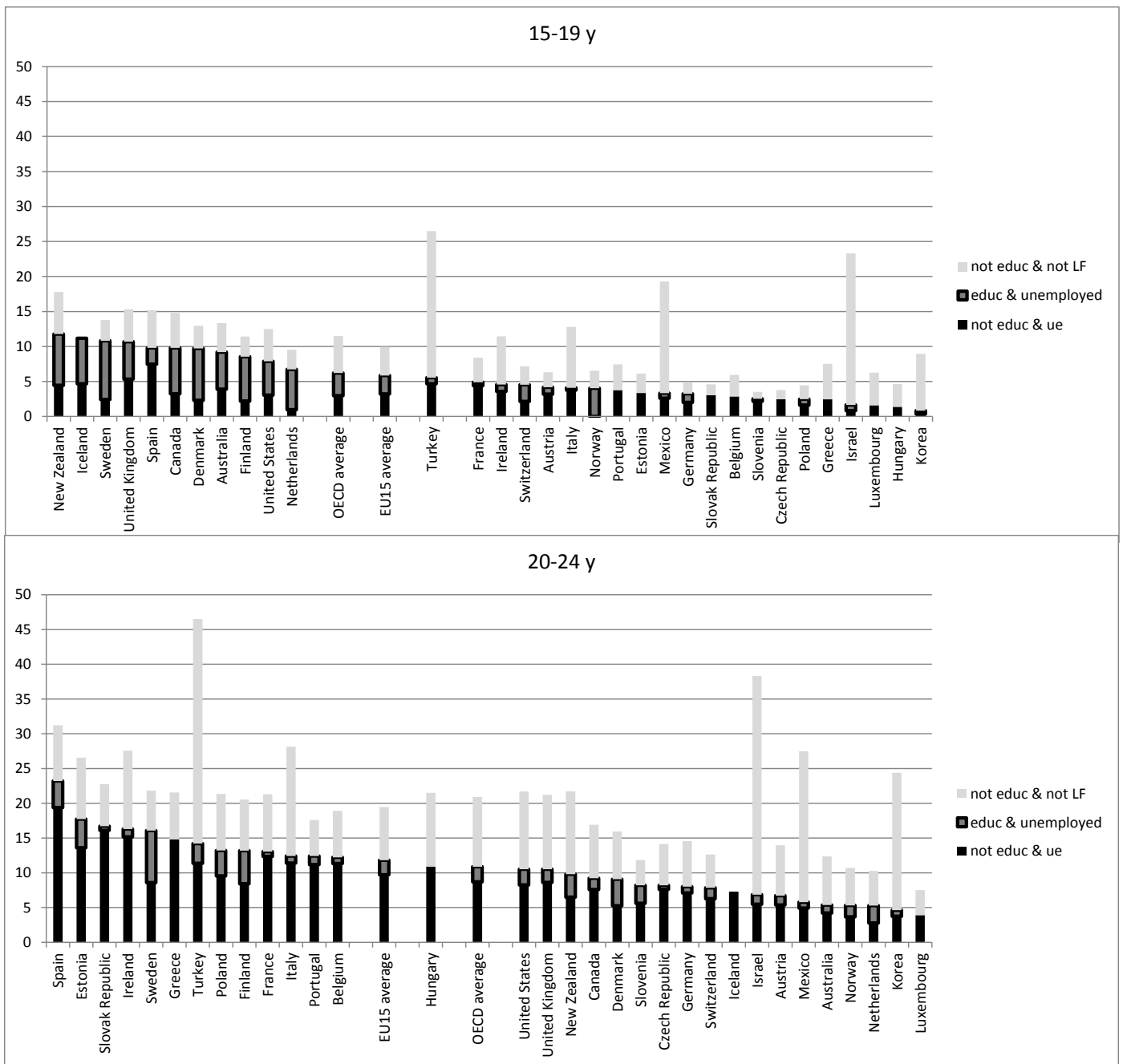
A 16: % Employed among 15-19y and 20-24y old



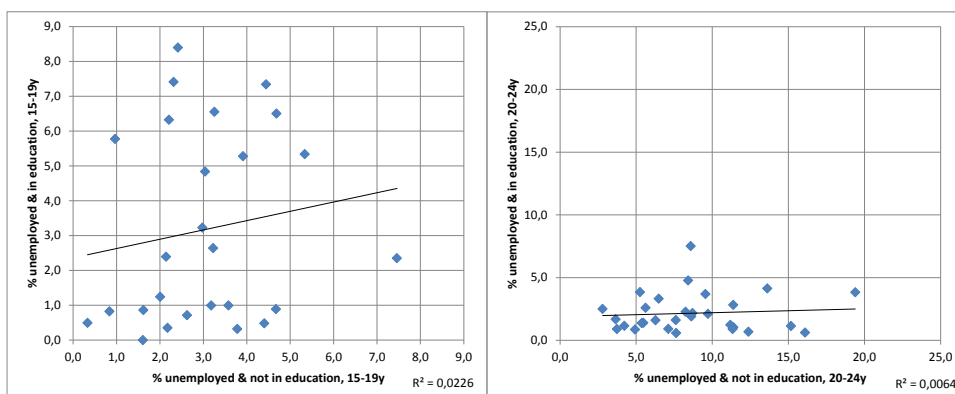
Source: OECD, EAG 2012, Indicator C5, own figure, calculations



A 17: % unemployed among 15-19y and 20-24y old



Source: OECD, EAG 2012, Indicator C5, own figure, calculations

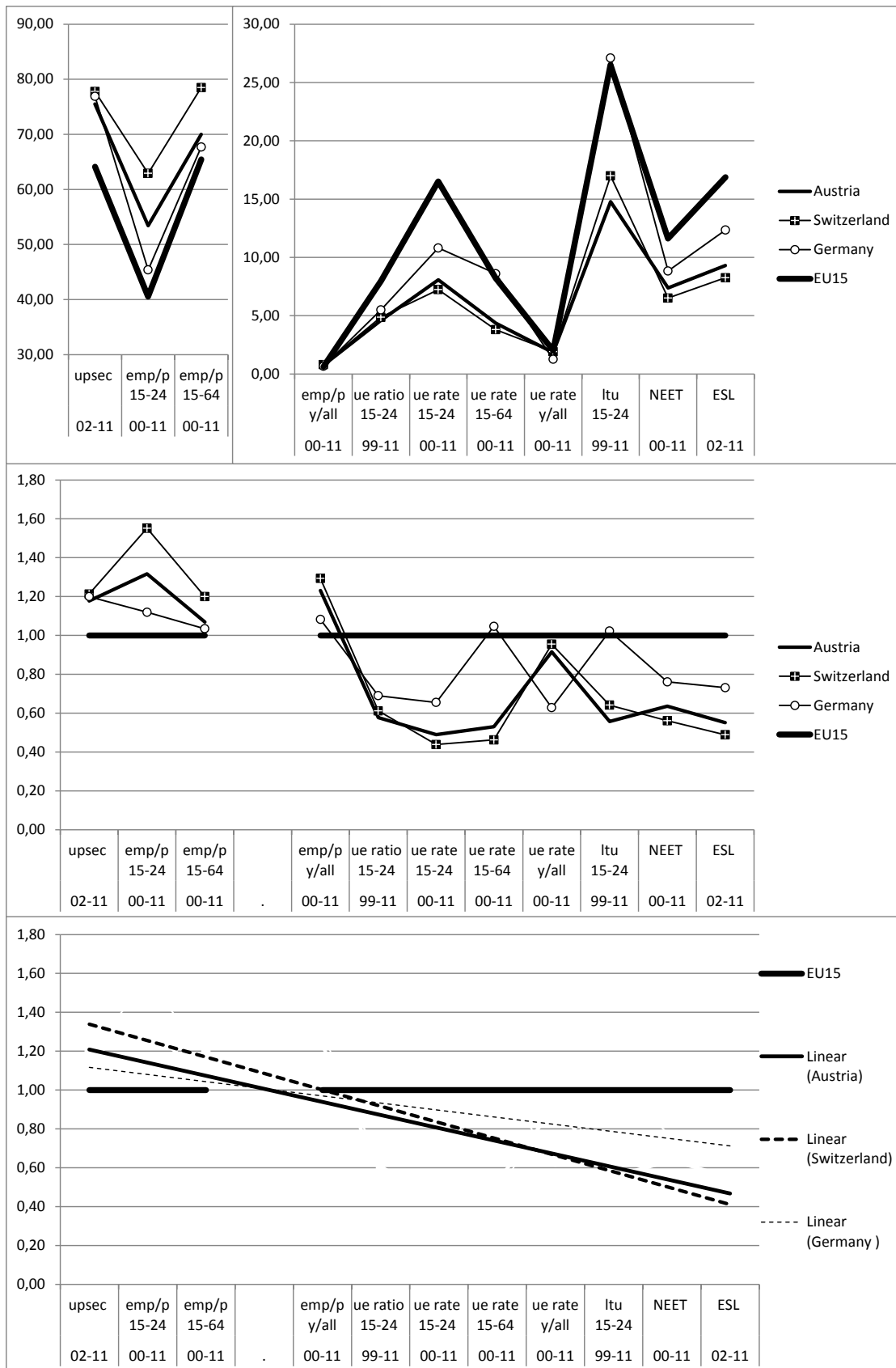


A 18: Youth education and labour market indicators Austria, Switzerland, Germany, EU15, 1999-2011, average available years

Indicator:	(1) upsec	(2) emp/p 15-24	(3) emp/p 15-64	(4) emp/p y/all	(5) ue ratio 15-24	(6) ue rate 15-24	(7) ue rate 15-64	(8) ue rate y/all	(9) ltu 15-24	(10) NEET	(11) ESL
Period:	02-11	00-11	00-11	00-11	99-11	00-11	00-11	00-11	99-11	00-11	02-11
Percentage, except (4) and (8) index, all=1											
Austria	75,52	53,40	69,98	0,76	4,59	8,07	4,36	1,84	14,77	7,38	9,30
Switzerland	77,78	62,91	78,49	0,80	4,87	7,23	3,80	1,91	16,99	6,51	8,25
Germany	76,91	45,39	67,70	0,67	5,49	10,81	8,60	1,26	27,10	8,83	12,34
EU15	64,12	40,55	65,45	0,62	7,96	16,50	8,22	2,01	26,52	11,61	16,88
Index, EU15=1											
Austria	1,18	1,32	1,07	1,23	0,58	0,49	0,53	0,92	0,56	0,64	0,55
Switzerland	1,21	1,55	1,20	1,29	0,61	0,44	0,46	0,95	0,64	0,56	0,49
Germany	1,20	1,12	1,03	1,08	0,69	0,65	1,05	0,63	1,02	0,76	0,73
EU15	1	1	1	1	1	1	1	1	1	1	1

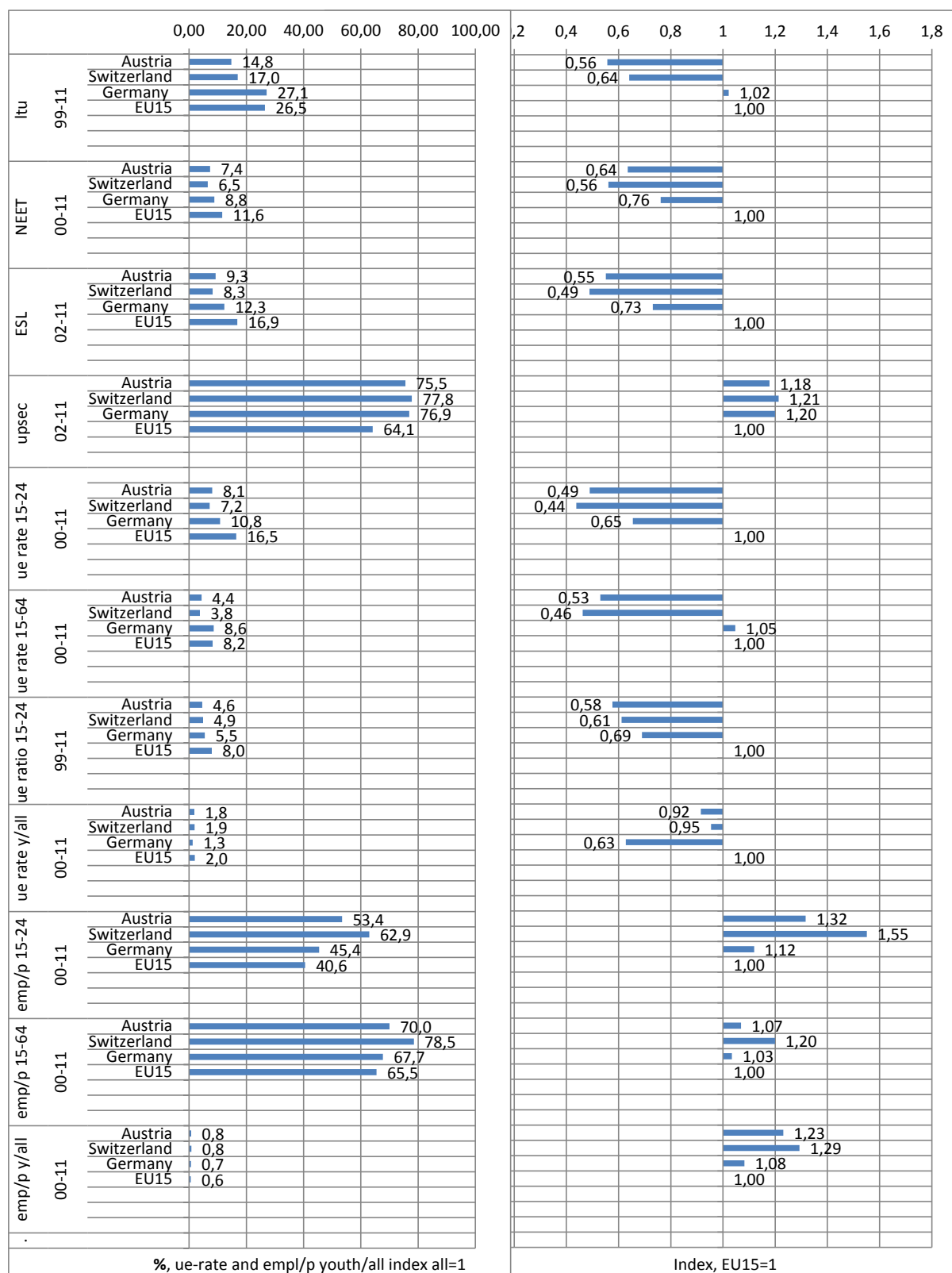
Source: EUROSTAT, Dashboard of EU Youth Indicators (ltu 15-24, NEET, ESL, upsec, youth unemployment ratio); OECD, Online OECD Employment database (unemployment rates, employment/population); (1) Young people (20-24) having at least completed upper secondary education, (2) employment/population 15-24 years, (3) employment/population 15-64 years, (4) indicator 2 / indicator 3, (5) unemployment/population 15-24 years, (6) youth unemployment rate, 15-24 years, (7) total unemployment rate, 15-64 years, (8) indicator 6 / indicator 7, (9) Long-term youth unemployment rate, (10) Young people not in employment, education or training (NEET), (11) Early leavers from education and training

A 19: Youth education and labour market indicators Austria, Switzerland, Germany, EU15, 1999-2011, average available years



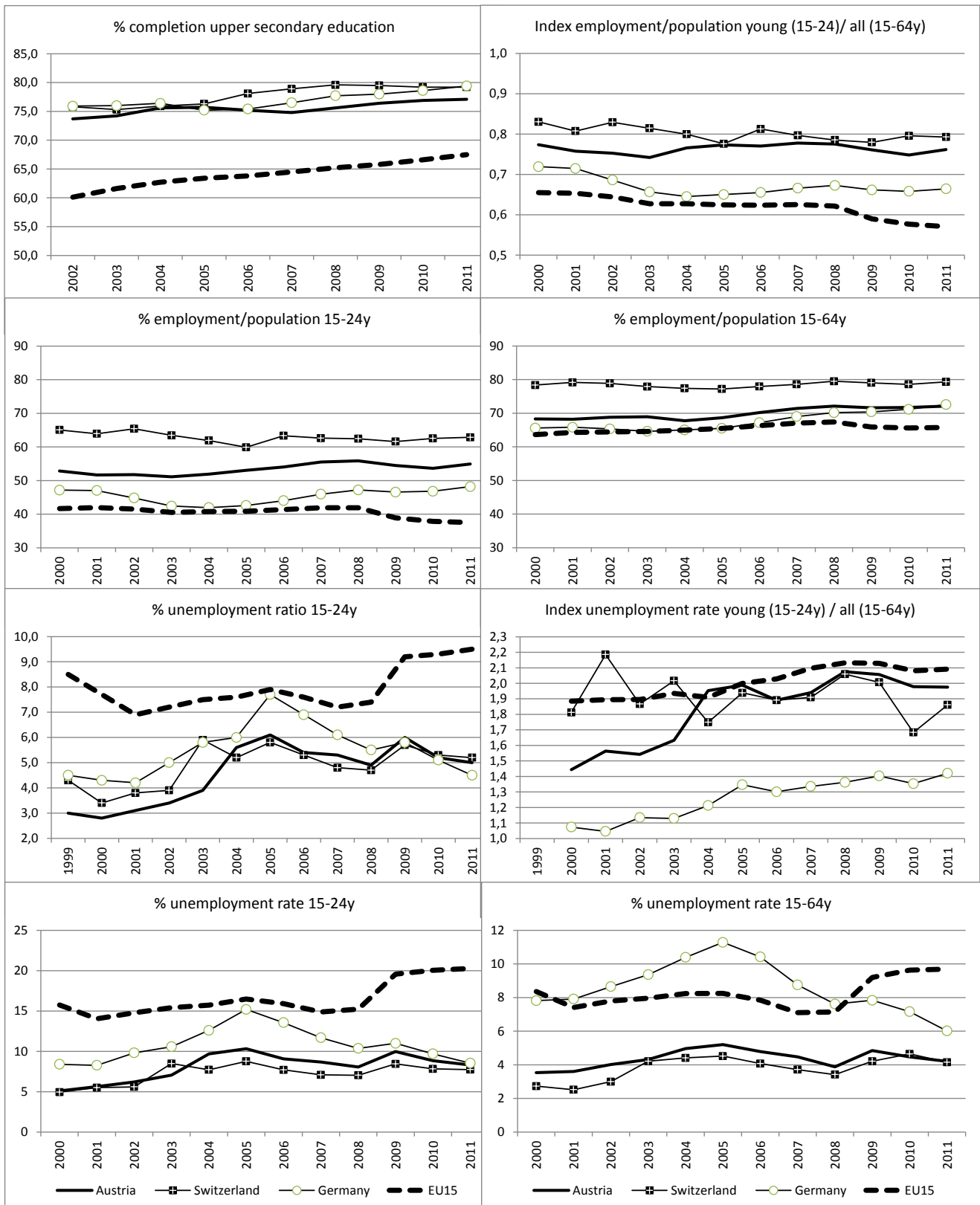
Source. Eurostat, OECD, own calculations

A 20: Youth education and labour market indicators Austria, Switzerland, Germany, EU15, 1999-2011, average available years



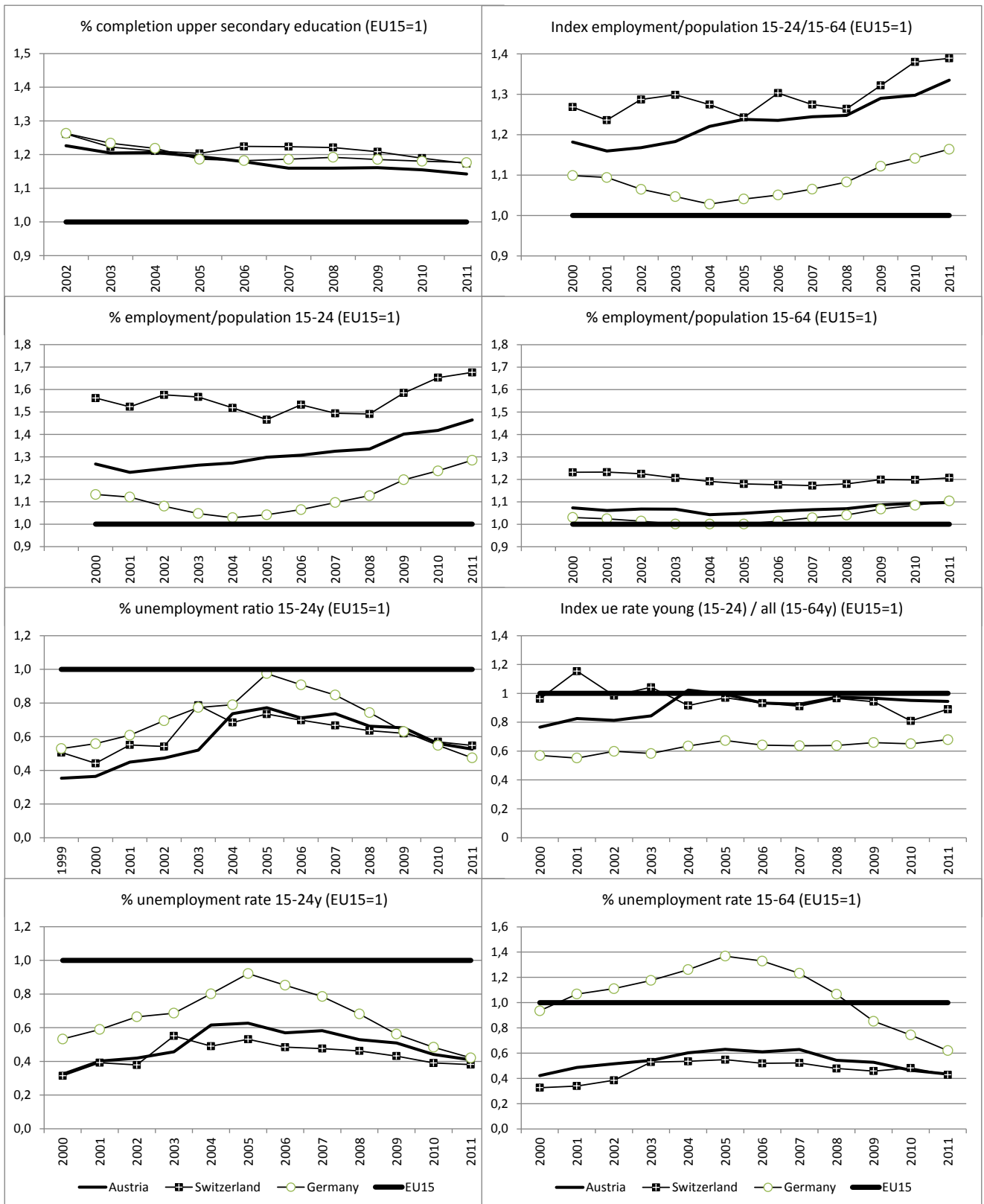
Source: EUROSTAT, Dashboard of EU Youth Indicators (Iu 15-24, NEET, ESL, upsec, youth unemployment ratio); OECD, Online OECD Employment database (unemployment rates, employment/population)

A 21: Youth education and labour market indicators Austria, Switzerland, Germany, EU15, 1999-2011, time series available years, percentage



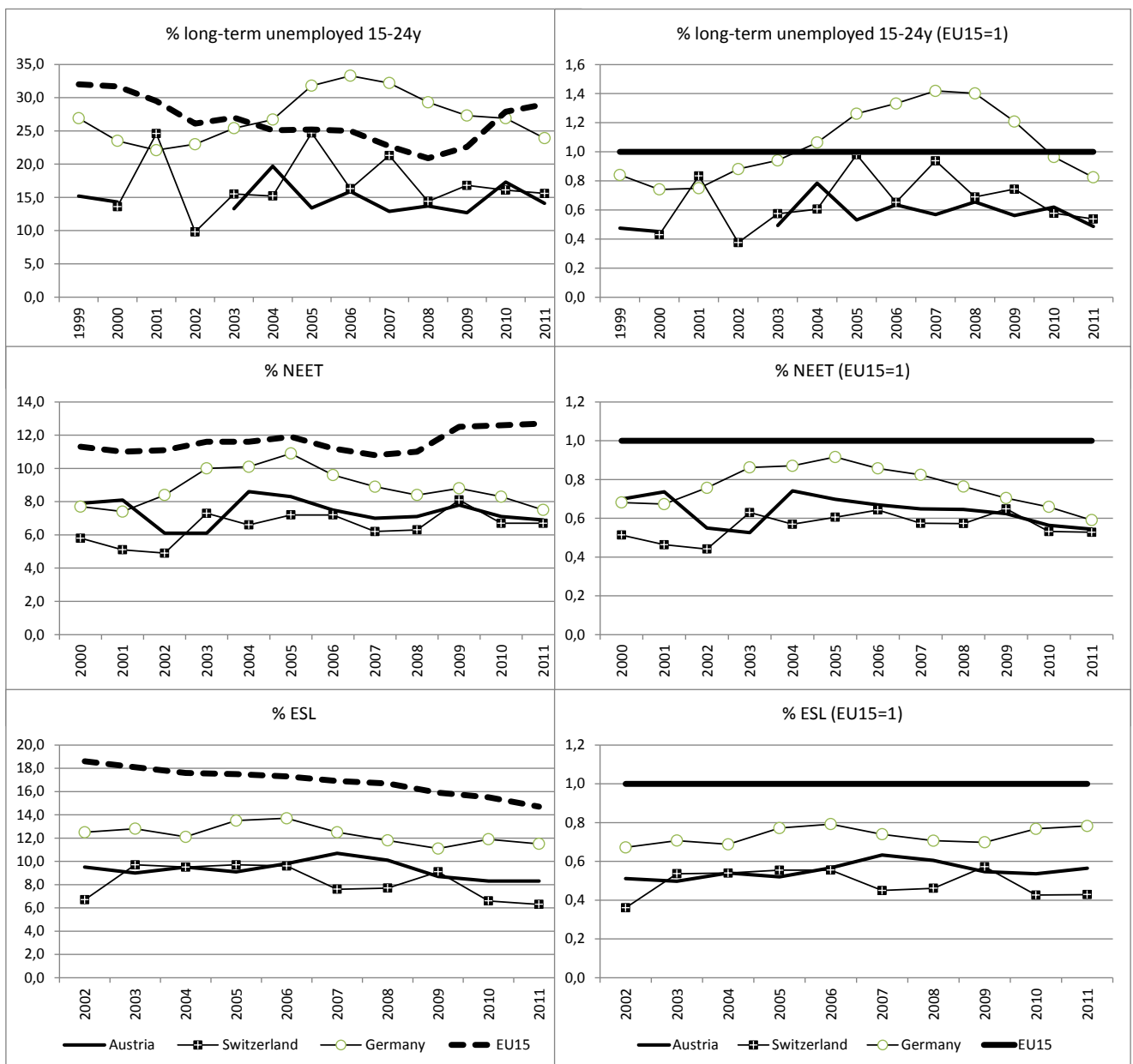
Source. Eurostat, OECD, own calculations

A 22: Youth education and labour market indicators Austria, Switzerland, Germany, EU15, 1999-2011, time series available years, index EU15=1



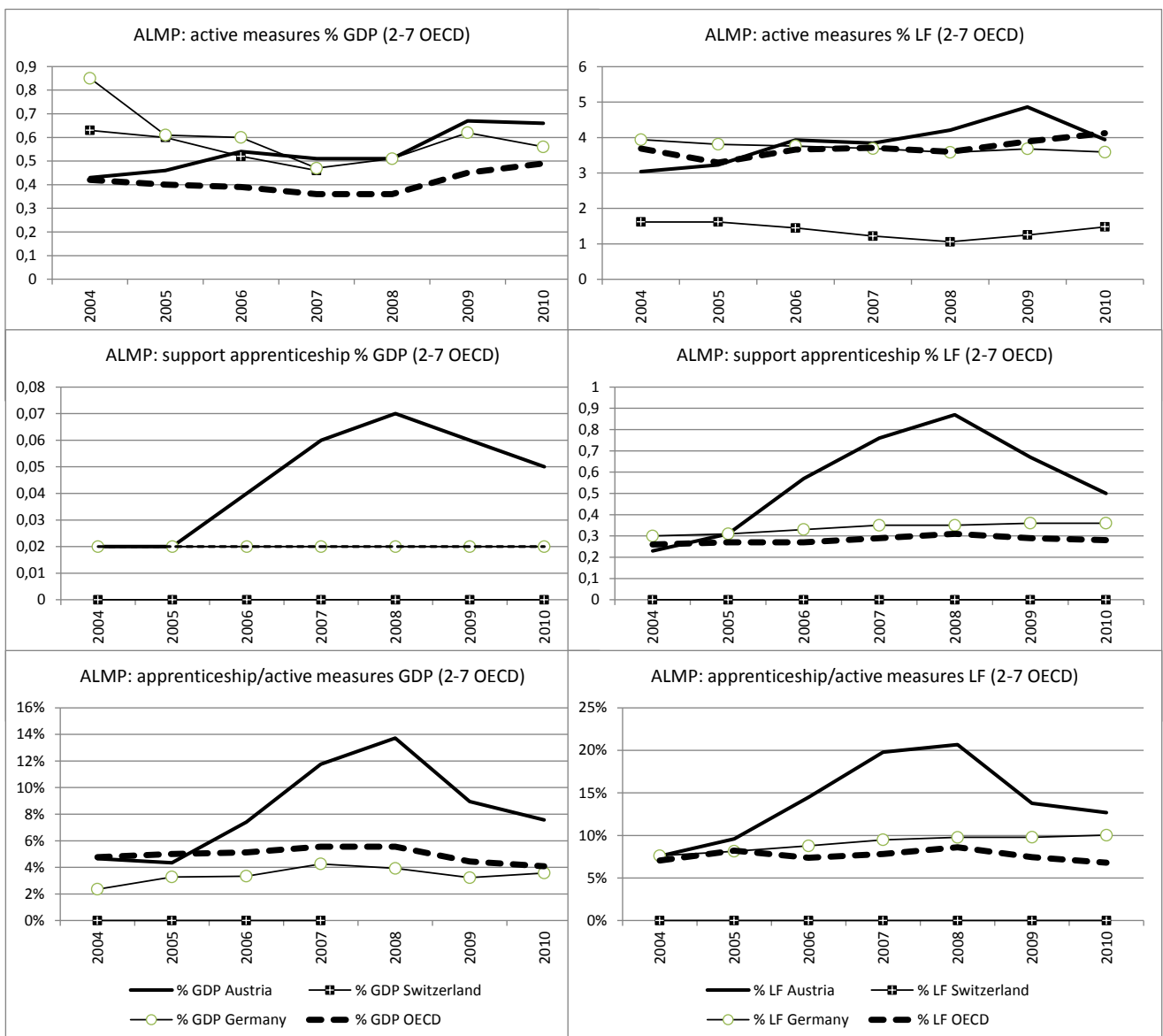
Source. Eurostat, OECD, own calculations

Continued youth indicators



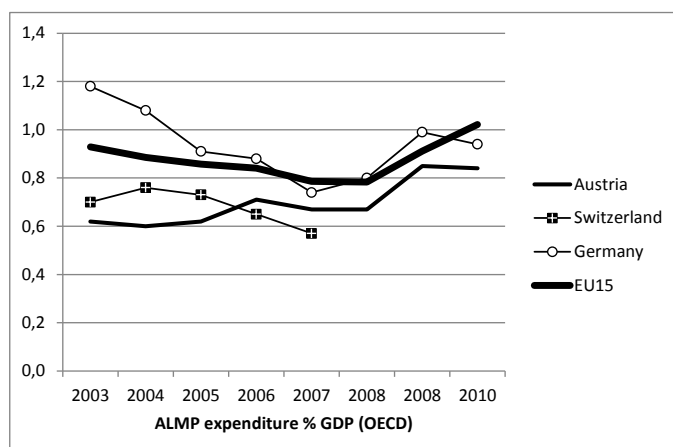
Source: OECD, Online OECD Employment database , own calculations

A 23: Labour market policy indicators, percentage



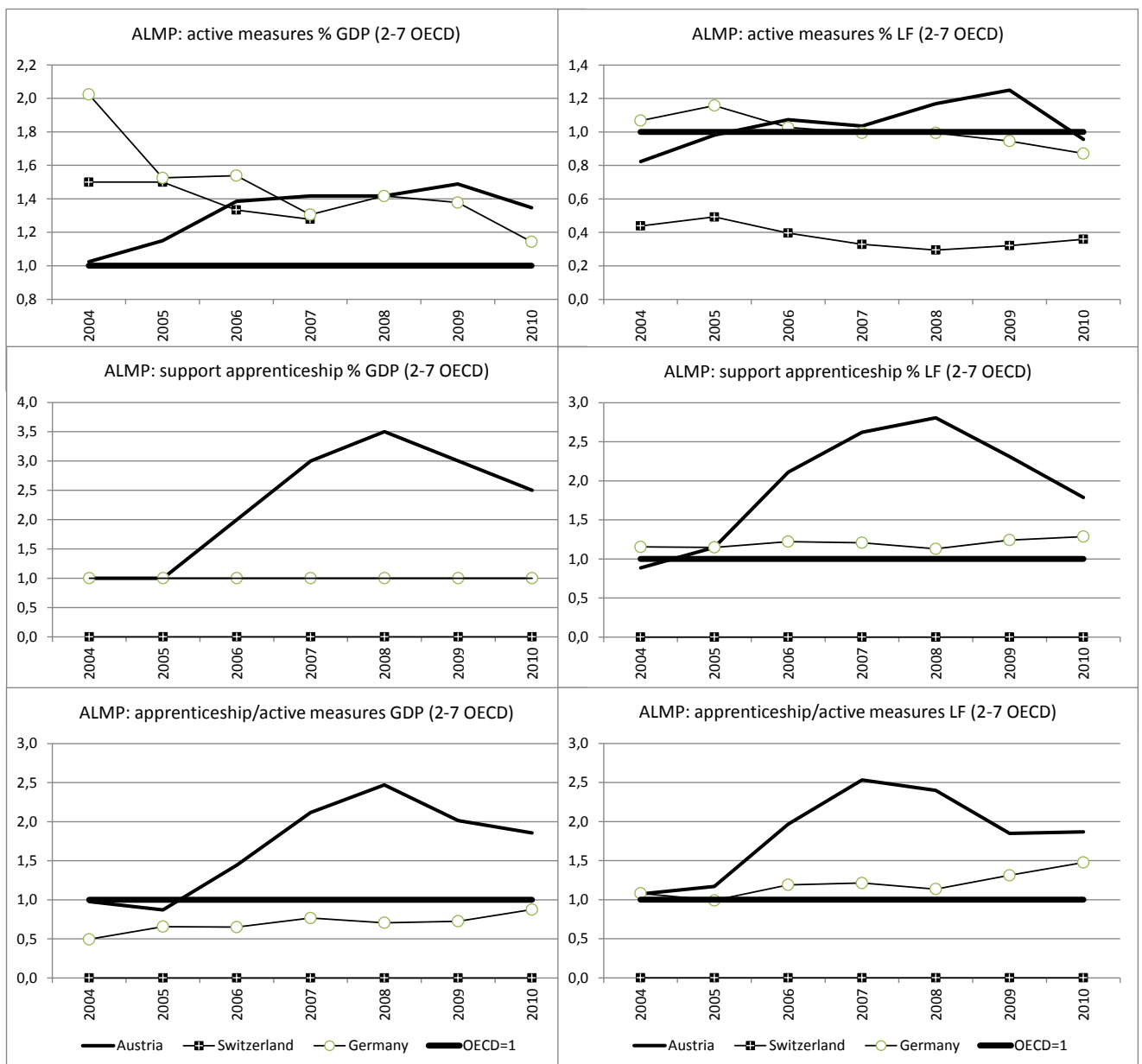
Source: OECD, Online OECD Employment database , own calculations

Total ALMP expenditure % GDP



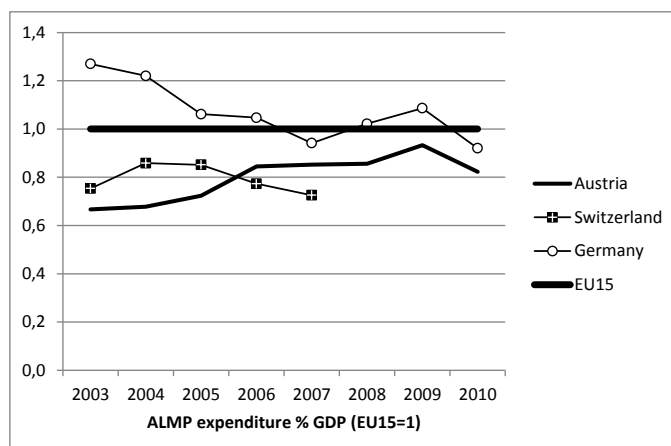
Source: OECD-Key tables 2012, own figure

A 24: Labour market policy indicators, index (OECD=1)



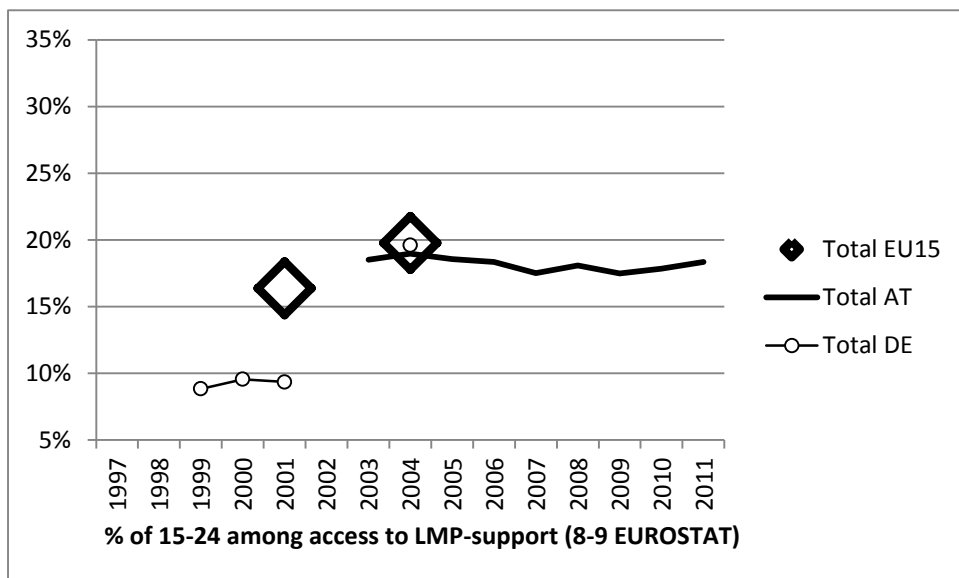
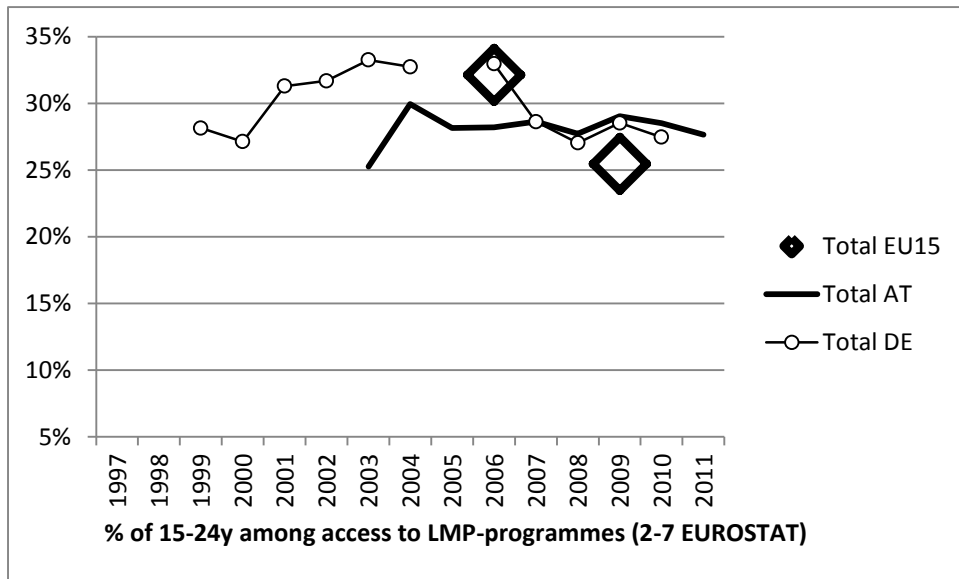
Source: OECD, Online OECD Employment database , own calculations

Total ALMP expenditure % GDP (Index)



Source: OECD, own figure, calculations

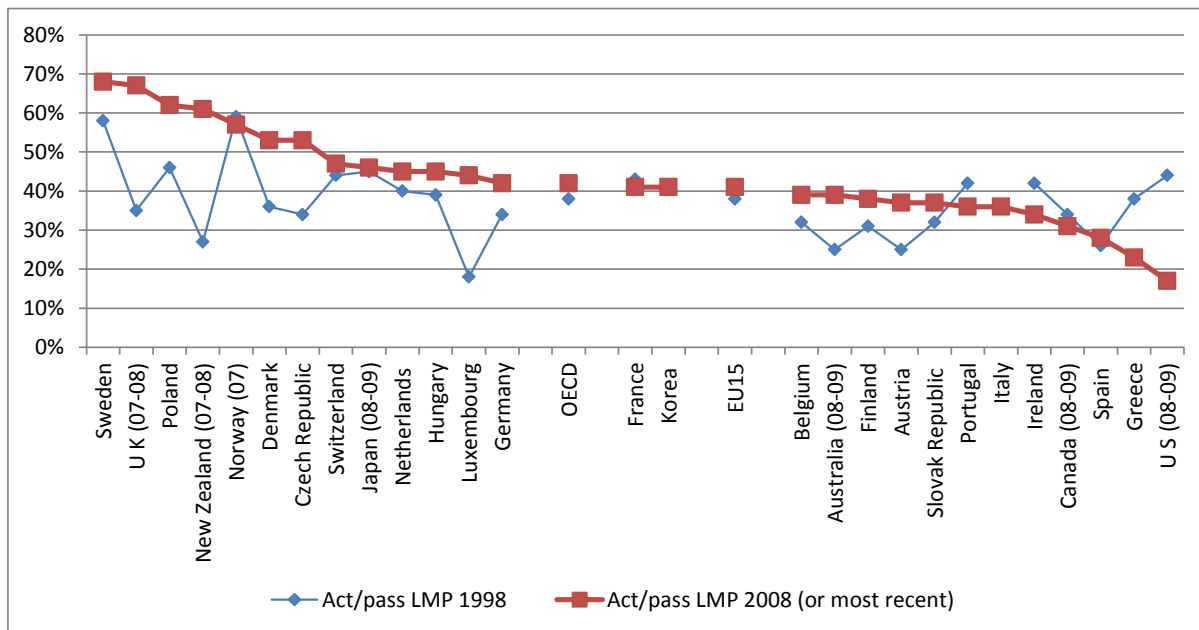
A 25: 15-24y among total access to LMP programmes (2-7) and support (8-9), plausible available years for Austria, Germany and EU15 1997-2011 (Switzerland no figures available)



Source: Eurostat, labour market policy database, participants, own figure, calculations

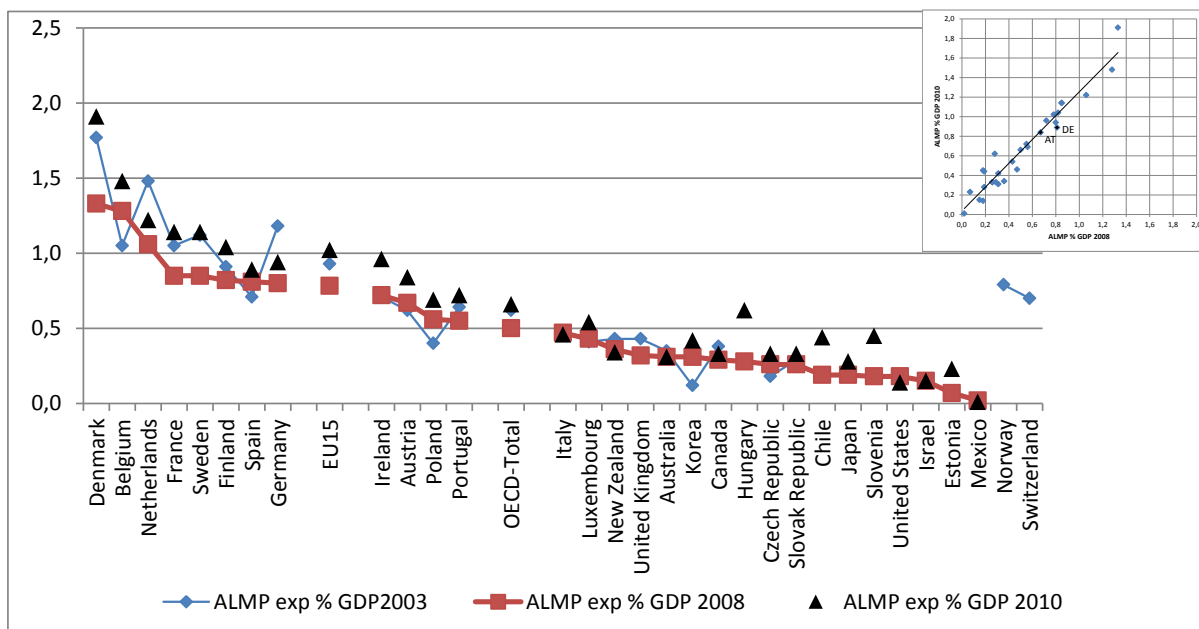
A 26: LMP Traditions 1998 to 2010

Relationship active to passive LMP expenditure 1998, 2008



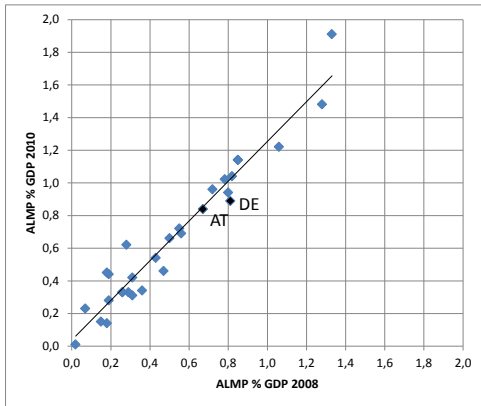
Source: OECD (2010) Social, Employment and Migration Working Papers N° 112, Fig.1.5, own calculations

A 27: ALMP as % of GDP 2003, 2008, 2010



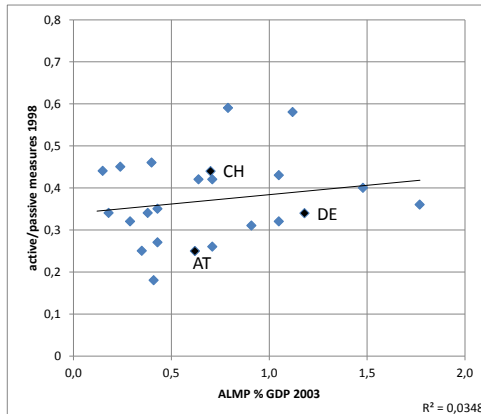
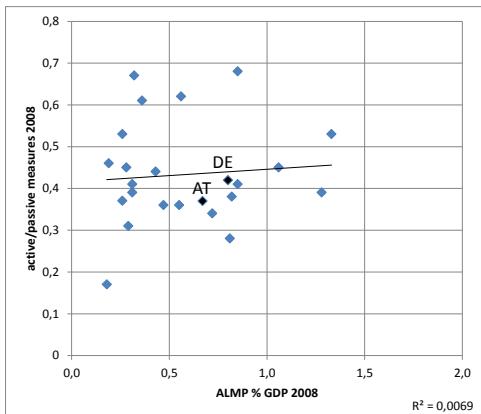
Source: OECD Employment and Labour Market Key Tables 2012, own figure, calculations

A 28: ALMP as % of GDP 2008 and 2010



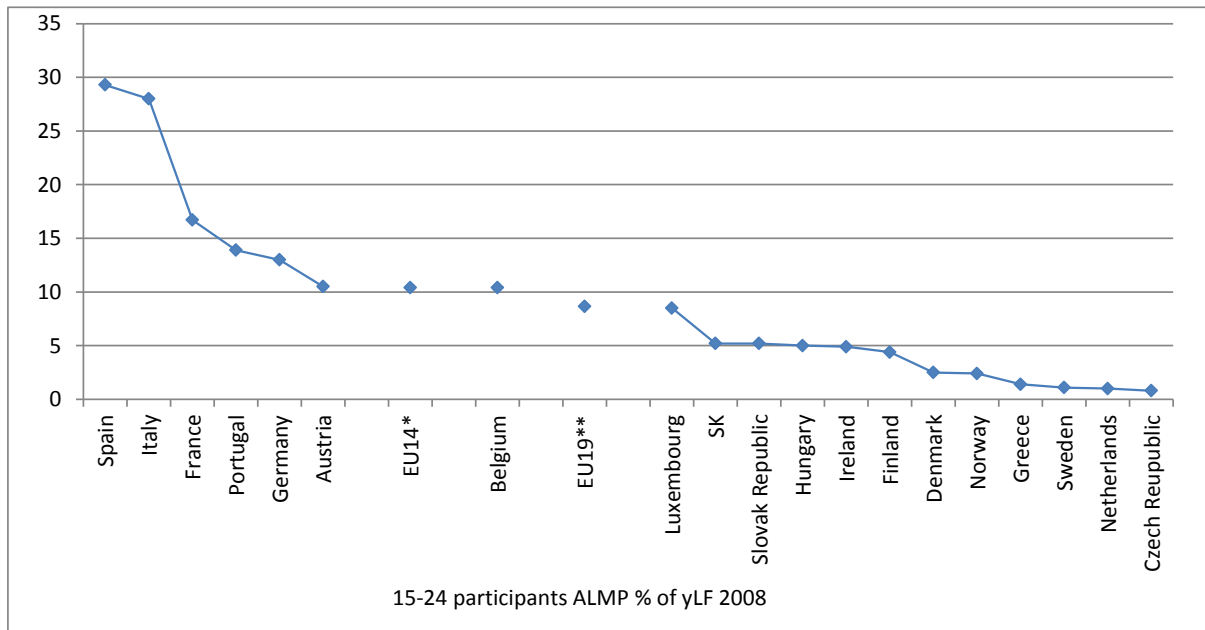
Source: OECD Employment and Labour Market Key Tables 2012, own figure, calculations

ALMP as % GDP and active/passive expenditure 2008, 2003, 1998



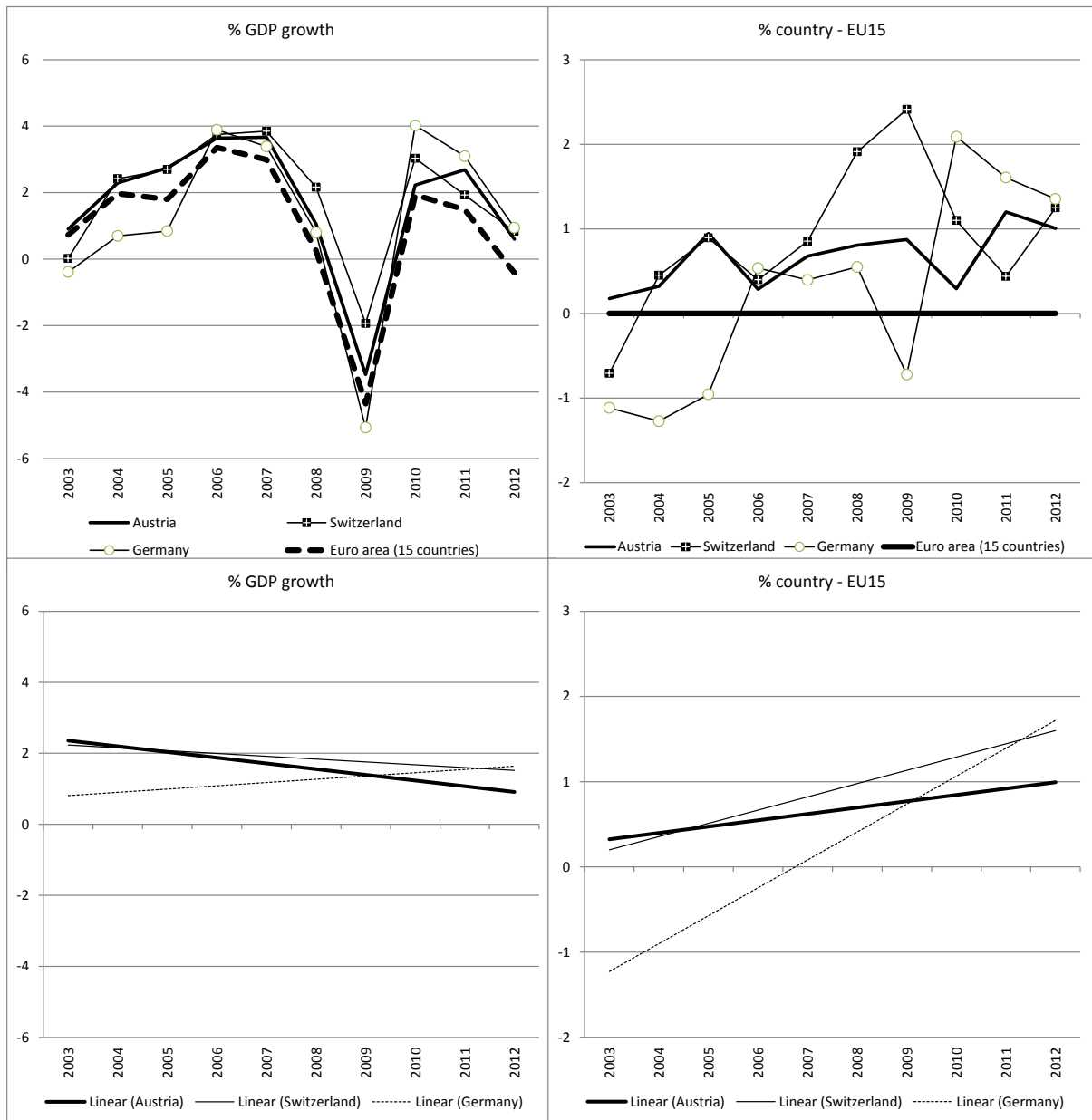
Source: OECD Employment and Labour Market Key Tables 2012; OECD (2010) Social, Employment and Migration Working Papers N° 112, Fig.1.5, own calculations

A 29: Youth (15-24) participants in ALMP as % of young (15-24) labour force, available EU countries, 2008



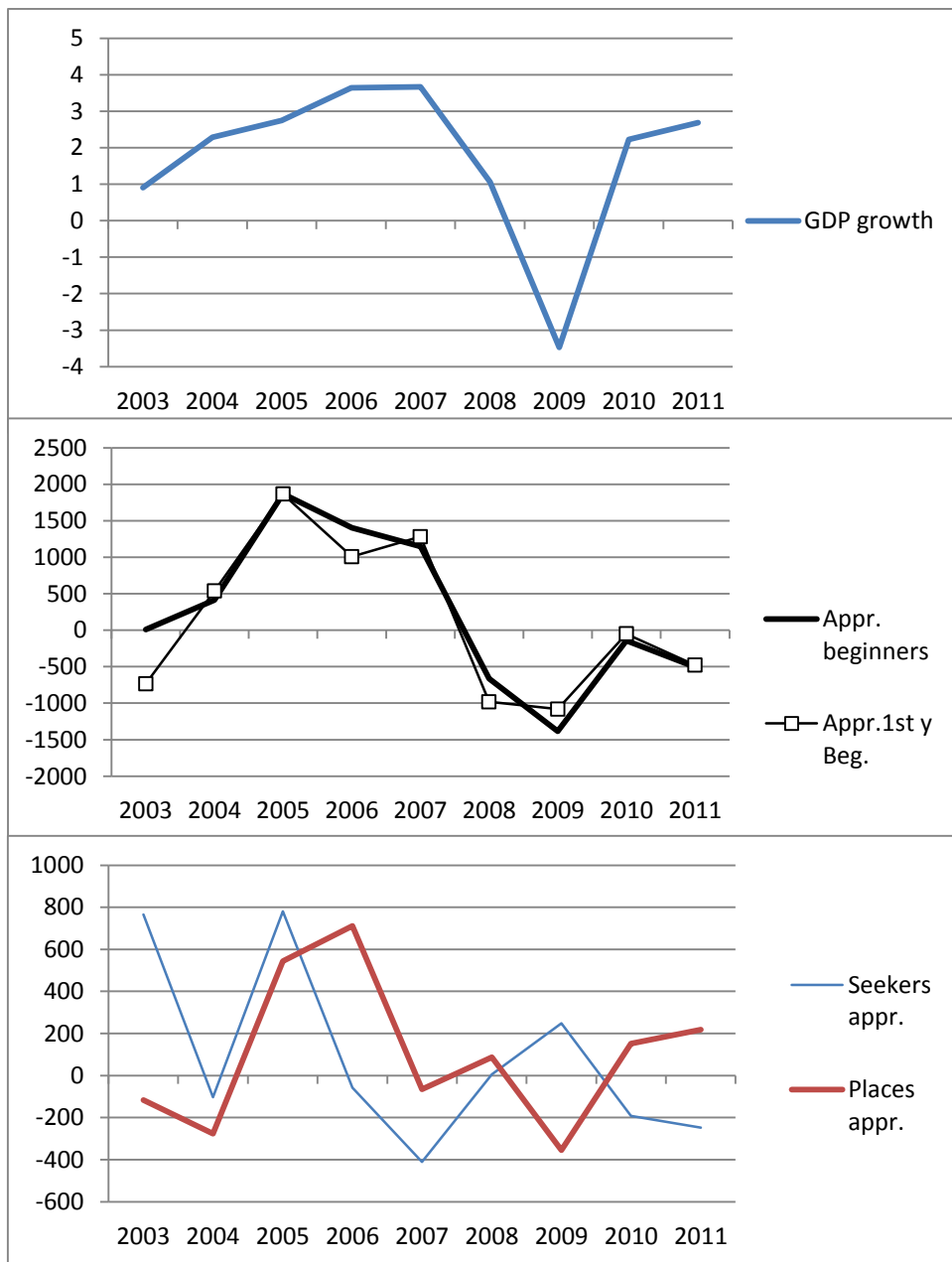
Source: estimation, based on OECD, Jobs for Youth synthesis report, Figure 6.1, p.125, *UK missing, **countries available

A 30: GDP Growth in Austria, Switzerland, Germany, EU15, 2003-12



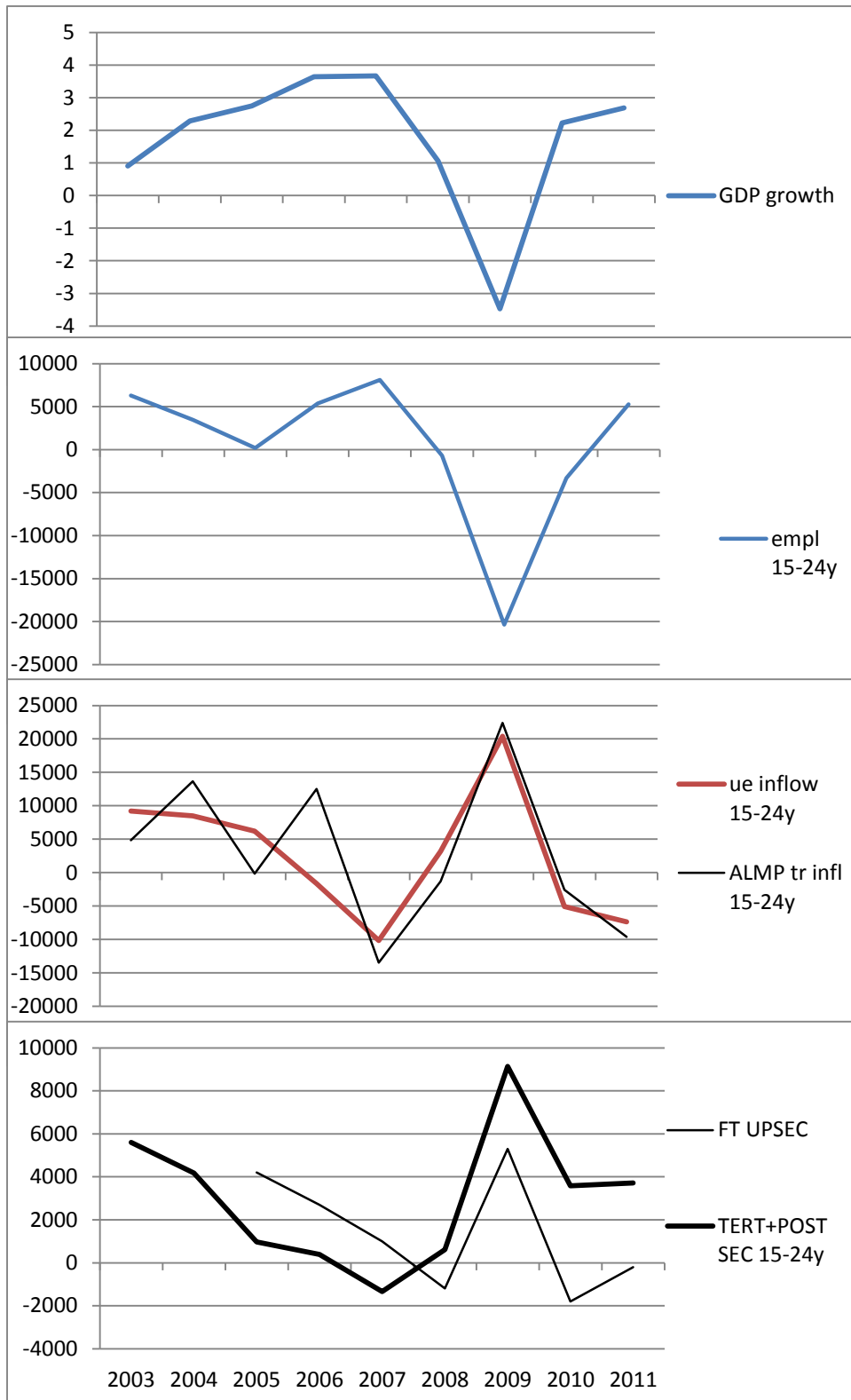
Source: OECD Economic Outlook No 92 - December 2012 - OECD Annual Projections MetaData from OECD.Stat

A 31: GDP growth, apprenticeship beginners, apprenticeship market, differences t to t-1, 2002-2011



Source: OECD (growth), BMASK Bali web (apprenticeship), own figures, calculations

A 32: GDP growth, youth employment, unemployment, ALMP training, upper secondary, postsecondary and tertiary education, differences t to t-1, 2002-2011



Source: OECD (growth), BMASK Bali web (employment, unemployment, ALMP), Statistics Austria, BMUKK, BMWF data warehouse (education)

A 33: Sources and links

Austria:

BMASK, Bali web <http://www.dnet.at/bali/Default.aspx>

BMASK 2012, Aktive Arbeitsmarktpolitik in Österreich

BMUKK, http://www.bmukk.gv.at/medienpool/13314/biji_2006.pdf,

http://www.bmukk.gv.at/medienpool/15071/stat_tb_2006.xls

BMWF, uni:data, Datawarehouse Hochschulbereich

http://eportal.bmbwk.gv.at/portal/page?_pageid=93,140222&_dad=portal&_schema=PORTAL

Statistik Austria, Schulen, Schulbesuch

http://www.statistik.at/web_de/statistiken/bildung_und_kultur/formales_bildungswesen/schulen_schulbesuch/index.html

Statistik Austria, Bildung in Zahlen, Tabellenbände, 2010/11, 2007/08, 2006/07

Comparative:

EUROSTAT, Dashboard of EU Youth Indicators

http://epp.eurostat.ec.europa.eu/portal/page/portal/employment_social_policy_equality/youth_policy/dashboard_youth

EUROSTAT, Labour market policy database

http://epp.eurostat.ec.europa.eu/portal/page/portal/labour_market/labour_market_policy/database

OECD, Employment policies and data, Online OECD Employment database

<http://www.oecd.org/employment/employmentpoliciesanddata/onlineoecdemploymentdatabase.htm#unr>

OECD, Employment policies and data, Online OECD Employment database, Scoreboard on youth aged 15-24

<http://www.oecd.org/els/employmentpoliciesanddata/scoreboard%20EN.xlsx>

OECD 2012, Public expenditure on active labour market policies % of GDP, Employment and labour markets:

Key tables from OECD http://www.oecd-ilibrary.org/employment/employment-and-labour-markets-key-tables-from-oecd_20752342

OECD, EAG 2012, Indicator C5, Table C5.2a. Percentage 15-29 year-olds in education and not in education

(2010) Stat.Link <http://dx.doi.org/10.1787/888932667425>

OECD Social, Employment and Migration Working Papers N° 112, 21 Oct 2010, Activation Policies in

Switzerland by Nicola Duell, Peter Tergeist, Ursula Bazant, Sylvie Cimper

<http://dx.doi.org/10.1787/5km4hd7r28f6-en>

OECD (2010), Off to a Good Start? Jobs for Youth. Paris: OECD <http://dx.doi.org/10.1787/9789264096127-en>;

see also <http://www.oecd.org/els/offtoagoodstartjobsforyouth.htm>